

ProPit™

USER MANUAL

(MEE1.000-26OCT09A)

**Please read this manual before operating your
units and keep it for future reference**

VRinsight
Virtual Reality Insight

All stated here is subject to change without advanced notice for improvement.

Tel : +82-31-284-7090~91 Fax : +82-31-284-7092 E-mail : tech@vrinsight.com Web site : www.vrinsight.com

VRinsight ProPit panel



The **ProPit panel** of **VRinsight** is a control and screen system for propeller type aircrafts. All gauges are displaying synchronized with Microsoft's Flight Simulator, supporting the default propeller type aircraft of MSFS and add-on propeller type aircrafts. Gauges are with full functional rotation knobs, push buttons and GPS providing users the most enthusiastic flight experience.

It is fully interfaced with MSFS9 and MSFSX through add-on software "**SerialFP2**" which enables **ProPit** to perform full simulation with simple USB connection to PC. Package includes a TFT LCD Monitor.

- **SerialFP2** software supports all functions to **ProPit panel**
- If you use a USB hub, be sure that the USB hub is USB 2.0 compliant. Otherwise it may cause a malfunction.

BEFORE USE : Thanks for purchasing VRi's ProPit.

Before operating your units, please read through this manual and keep it for future reference. For any further question, visit www.wilcopub.com or contact us below:

Fax : +32-2-33107 51

E-mail (Support team) : info@wilcopub.com

NOTE : This manual can be redistributed if you don't alter the content.
This manual has been written out on a ProPit panel basis.

All software (& software versions) stated here (MEE2.520-26OCT09A) is subject
To change without advanced notice for improvement.

If you want to download the latest driver version for panel & application
programs, visit www.vrinsight.com

ProPit picture (ProPit with Screen)



Features

- Same functionality and externality with real Propel type aircraft cockpit.
- Gauges on the panel;
 - SPEED indicator
 - ALTITUDE indicator with position bar setting rotary knob
 - ALTIMETER with BARO setting rotary knob
 - TURN COORDINATOR
 - HEADING indicator with heading bug and gyro rotary knob
 - VERTICAL SPEED indicator
 - VOR1 indicator with OBS rotary knob
 - VOR2 indicator with OBS rotary knob
 - ADF indicator with HDG rotary knob
 - FUEL/OIL gauge
 - TACHOMETER
 - CLOCK
 - GPS with push buttons and rotary knob (GPS500 model)
- Full metal cases
- One year warranty

Technical specifications

- USB interface type to computer
- External power requirement (for 20.1" TFT LCD monitor: Resolution[1680 * 1050]):
110V / 220V free voltage
Outlet for TFT LCD monitor is European standard.
- 48.5cm (L) * 33cm (H) : Height is adjustable.
- 9Kg (with TFT LCD monitor)

Operating software

- SerialFP2

Compatibility software

- Microsoft Flight simulator 2004 / FSX

SerialFP2 Installation

With Propit, an “Install DVD” is included. When you insert it in DVD driver of your computer, “*VRinsight HTML*” document will be shown. Then click “SerialFP2” (operating software) and install it at a proper folder.

“SerialFP2” is the main interfacing software of VRinsight used for all VRinsight flight panels.

SerialFP2 software supports all functions of Propit and completely interfaced with MSFS9 and MSFSX enables full simulation with simple connection your computer through USB.

Be sure that when installing SerialFP2 to check “Install USB-Serial Driver”

After installation, you can find “SerialFP2” in “All programs” of “Start menu”.



USB Connection

The connection between Propit and your computer is made by using a USB cable that plugs into one USB port on your computer. **If you use a USB hub, be sure that the USB hub is USB 2.0 compliant. Otherwise it may cause a malfunction.**

When you connect Propit to your computer, your computer will detect it and will describe the process step by step.

Power Connection

Power supply of Propit keys and buttons is done by USB port and that of TFT LCD monitor is done by 110V / 220V free power cable.

Run “SerialFP2”

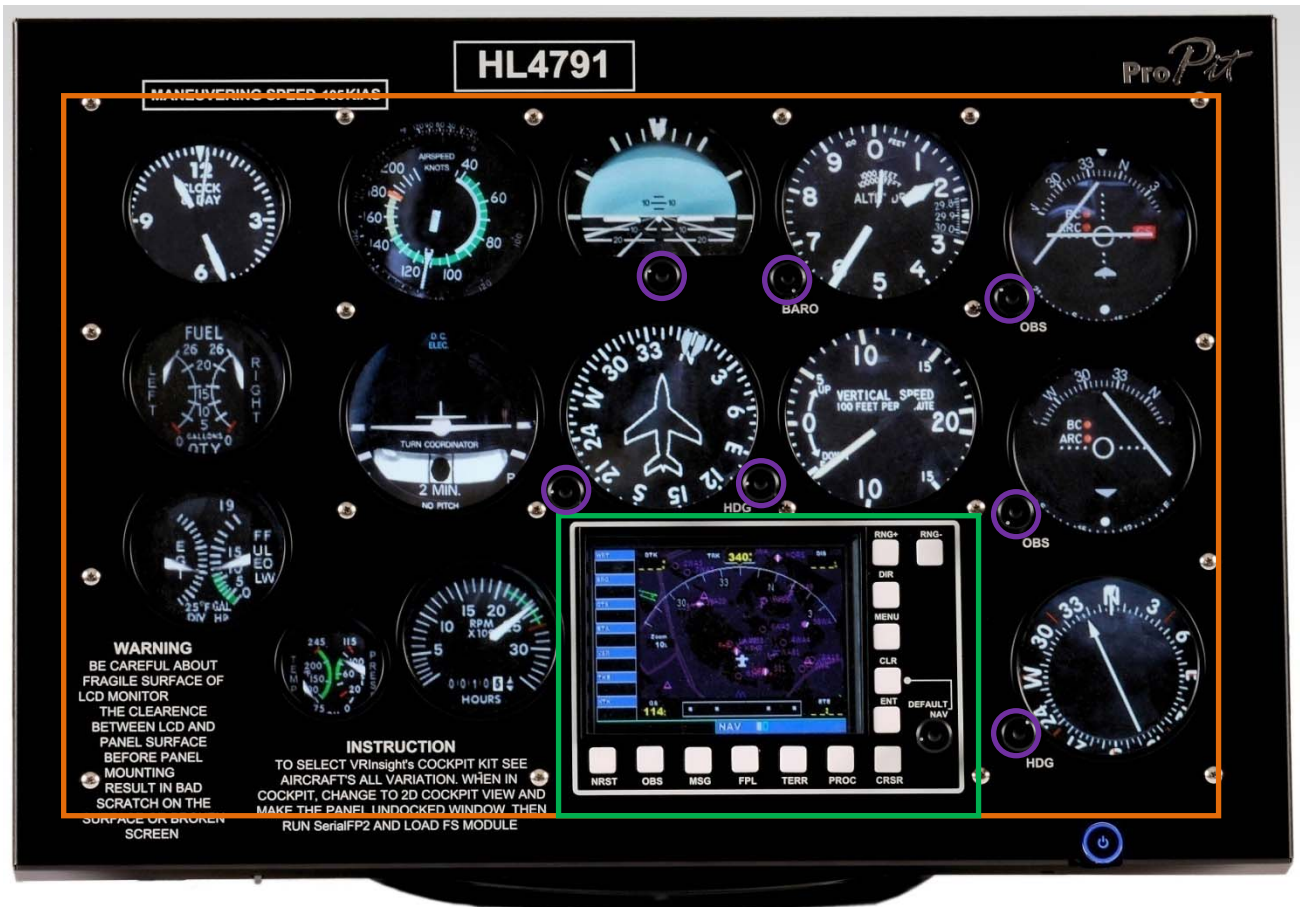
When all setup processes are done; “SerialFP2” installation, “USB connection” and “Power connection”, you are ready to operate Propit.

Download & install “FSUIPC”

Refer to “Download & install FSUIPC” at “Download” part of www.vrinsight.com

FS 9 requires FSUIPC v3.80 or later. FSX requires FSUIPC v 4.26 or later

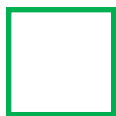
Controls & Displays for each part



Controllable gauges : VOR1, VOR2, HDG, ALT, Altitude indicator and Heading indicator



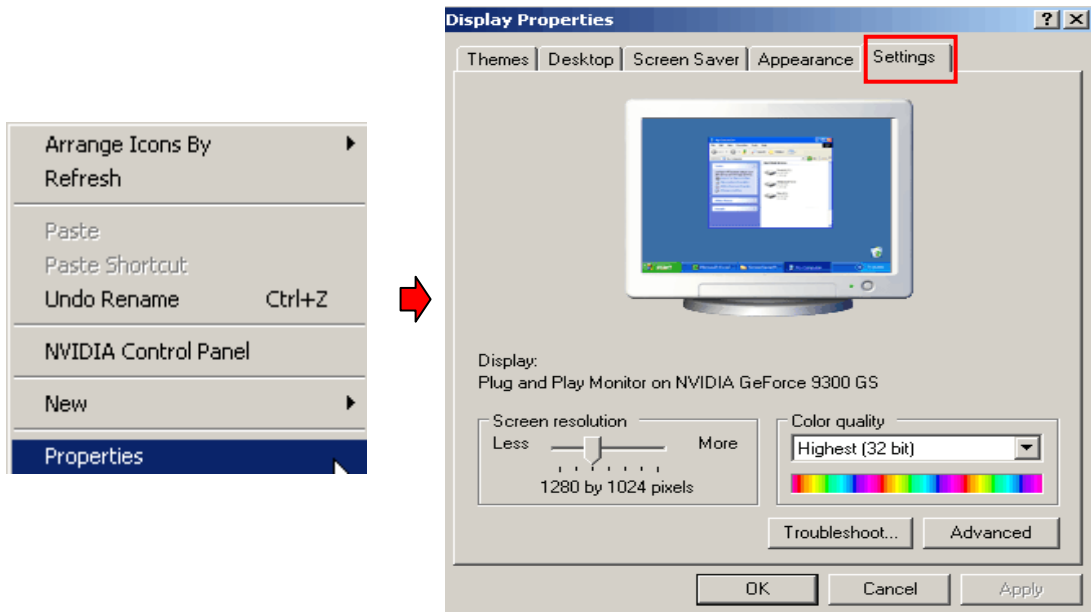
Display gauges : Airspeed indicator, Turn coordinator, RPM indicator, CLOCK, Fuel indicator, Fuel flow indicator



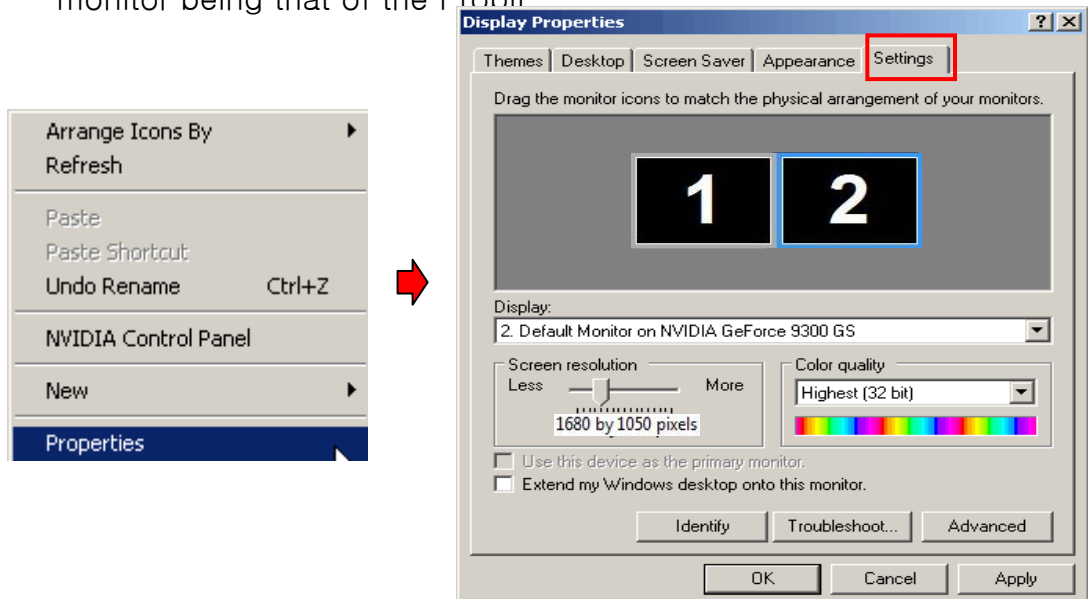
Controllable buttons : RNG+/-, DIR, MENU, CLR, ENT, CRSR, PROC, TERR, FPL, MSG, OBS, NRST

Monitor setting

1. Check the current display properties to identify the monitor(s) connected ("Settings" tab)

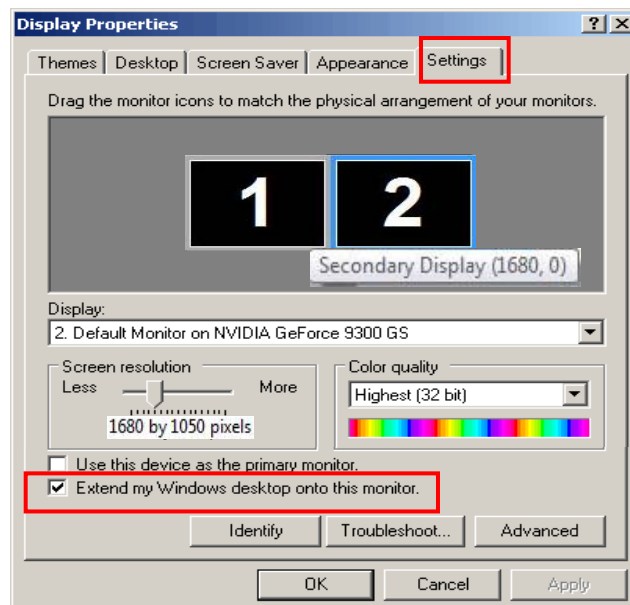


2. Connect video cable of Jetpit to your computer.
3. Connect AC/DC adaptor to your Propit.
4. If you run Windows Vista, restart your computer
- 4'. The display properties should now be as shown hereunder, the second monitor being that of the Pronit



* If the **ProPit** monitor (=Monitor 2) isn't detected, check the connection of video cable & AC/DC adaptor.

5. When the **ProPit** monitor is recognized, click monitor 2(=**ProPit** monitor).
6. Adjust the resolution for **ProPit** monitor.
(Recommended resolution is **1680 * 1050**).
7. Check the position of the monitor 2.
8. Check "Extend my Windows desktop onto this monitor".

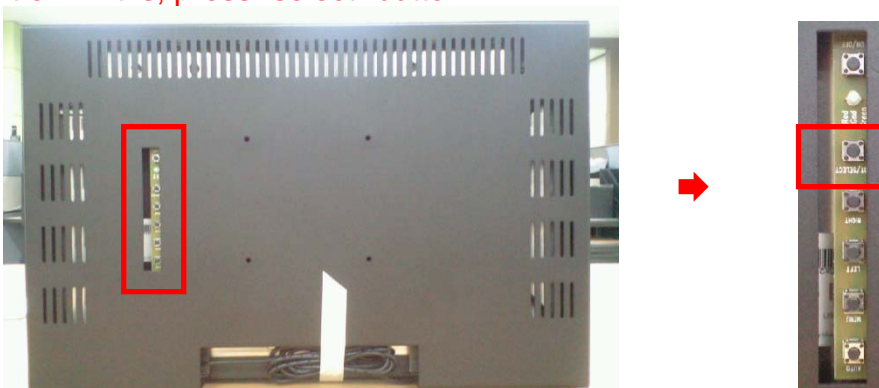


* If **ProPit** monitor doesn't illuminate, restart your computer.

9. Click "Apply" and click "OK"

10. If everything is done properly, **ProPit** will be power on.

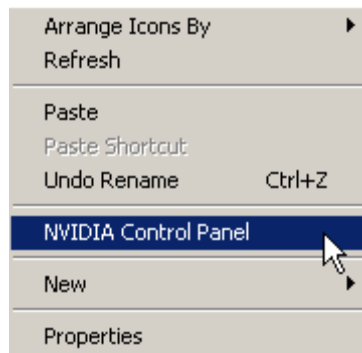
* If **ProPit** doesn't power on, restart your computer. And see if the indicator is red light on. If it is, press "select" button.



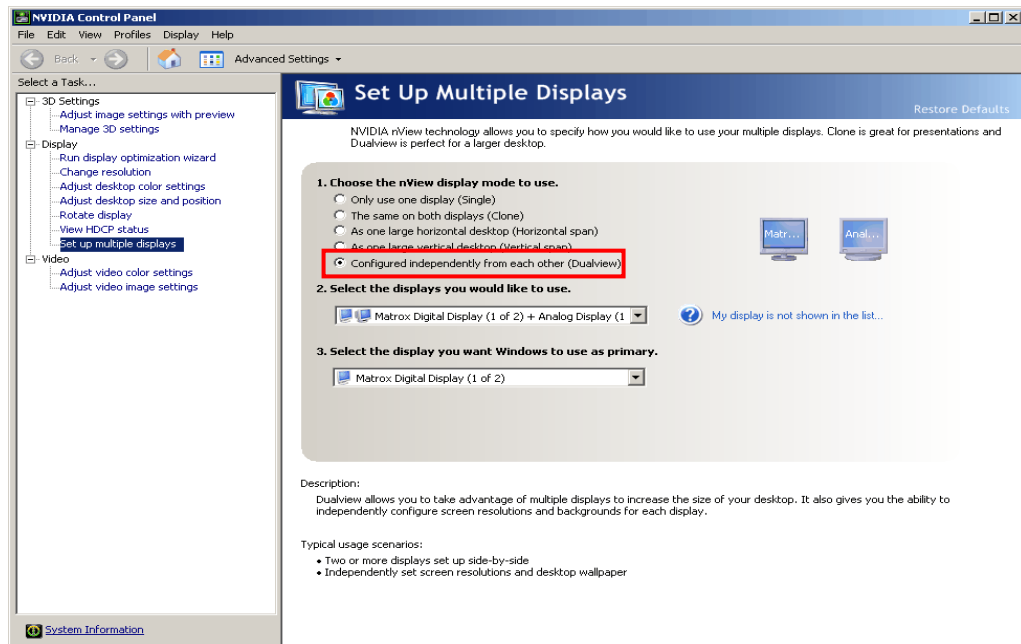
11. Multiple display

11-A. NVIDIA

11-A-1. Launch “NVIDIA Control Panel”.



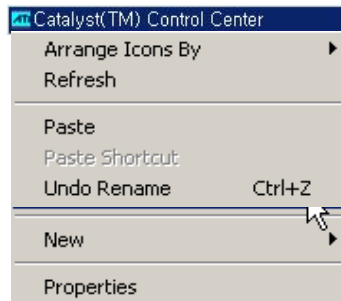
11-A-2. Go to “Set up multiple displays and check “Configured independently from each other (Dualview)”. Then the monitor of *ProPit* will independently display your “Desktop” view.



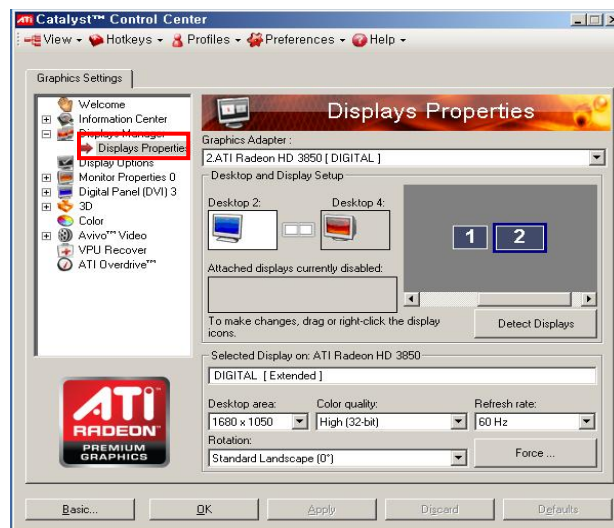
11-B. ATI

10-B-1. Launch “Catalyst(TM) Control Center”.

The monitor of *ProPit* will automatically display your “Desktop” view.



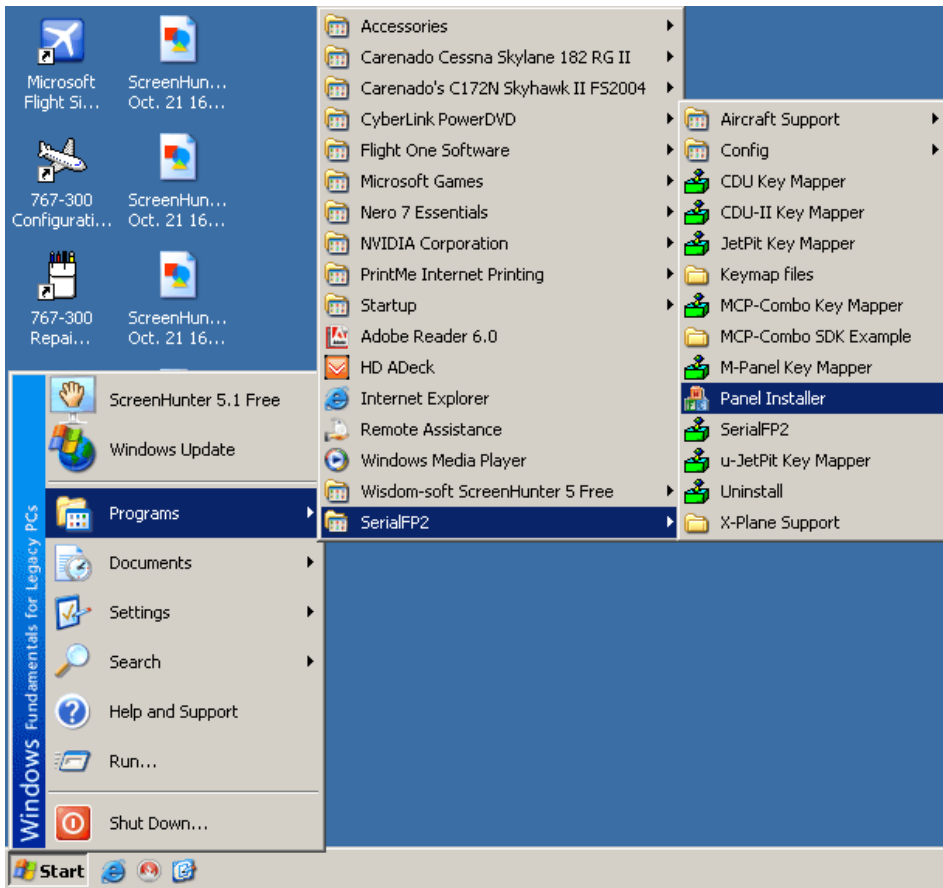
11-B-2. Go to “Displays Properties” and select monitor 2.



Panel installer launch

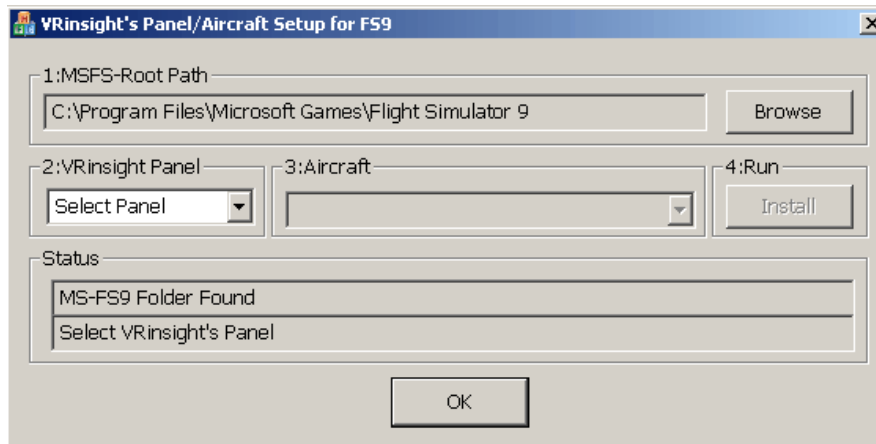
Panel installer will copy all necessary panel data to use Propit
Make sure SerialFP2 is NOT running when running Panel Installer.

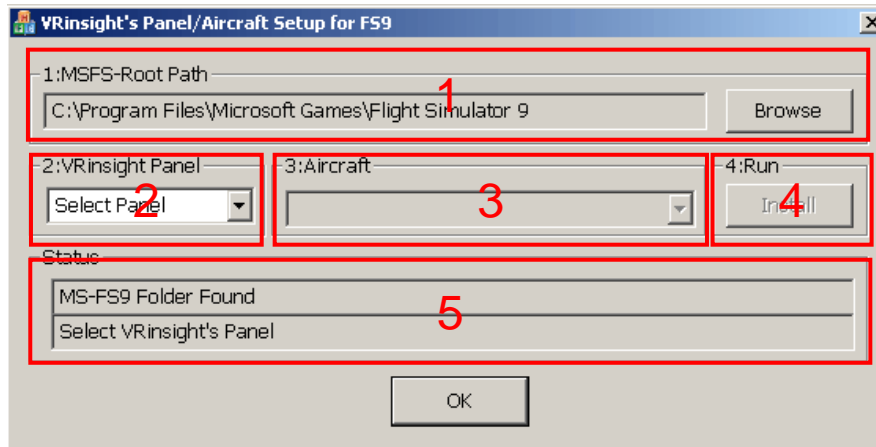
* Once the panel is installed, aircraft configuration is saved.
You can find “Panel Installer” in the Start menu – All programs – Serial FP2



How to use “Panel Installer”.

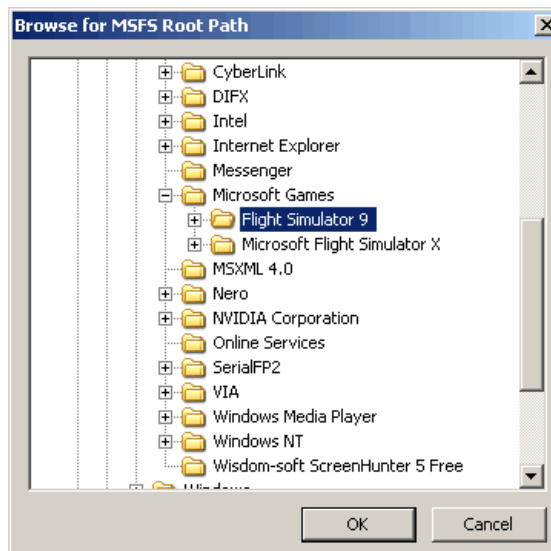
1.Run “Panel Installer” first



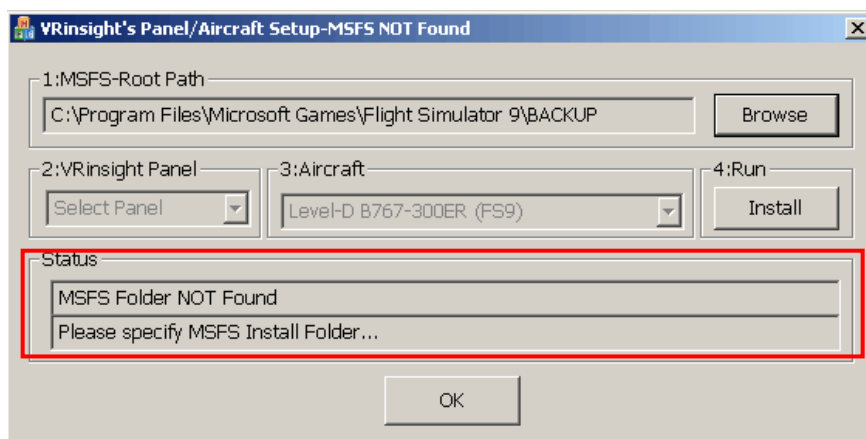


1.MSFS-Root Path : Browse the path where “Flight Simulator 9” or “Microsoft Flight Simulator X” is installed.

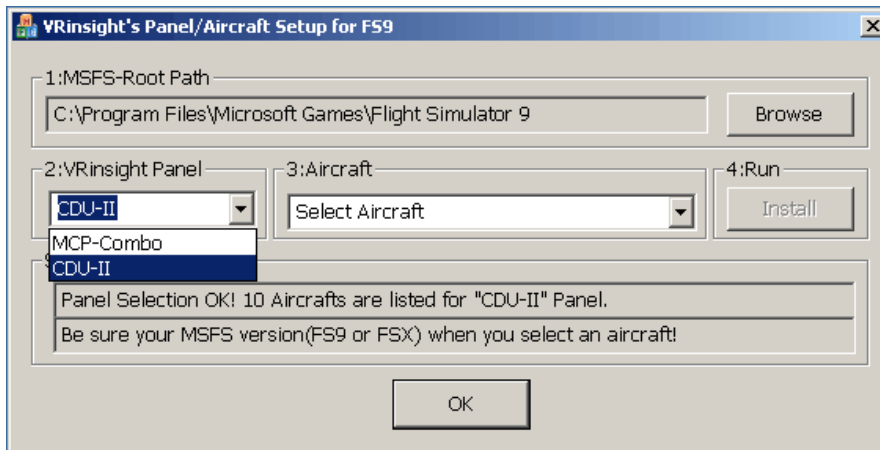
* If “Flight Simulator 9” or “Microsoft Flight Simulator X” is installed other “Drive” or “Directory”, find the path and click “OK”.



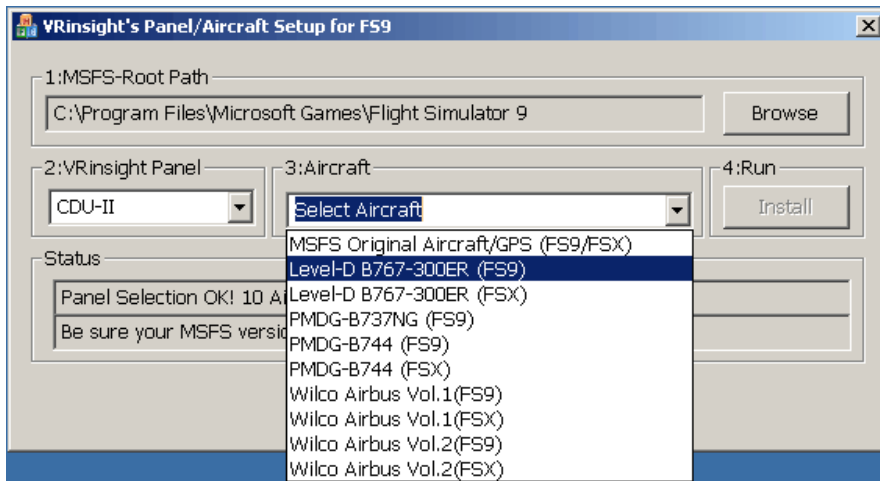
* if you select a wrong path, “Status” window displays error message.



2. VRinsight panel : Drop down and select your panel.

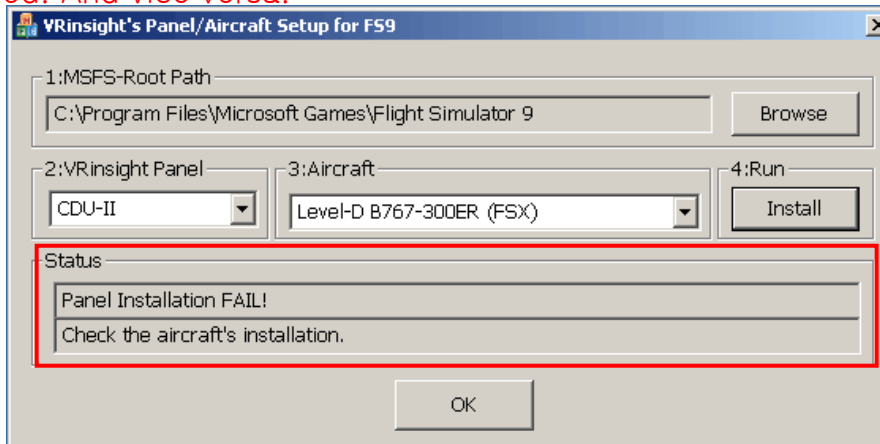


3. Aircraft : Drop down and select your aircraft.



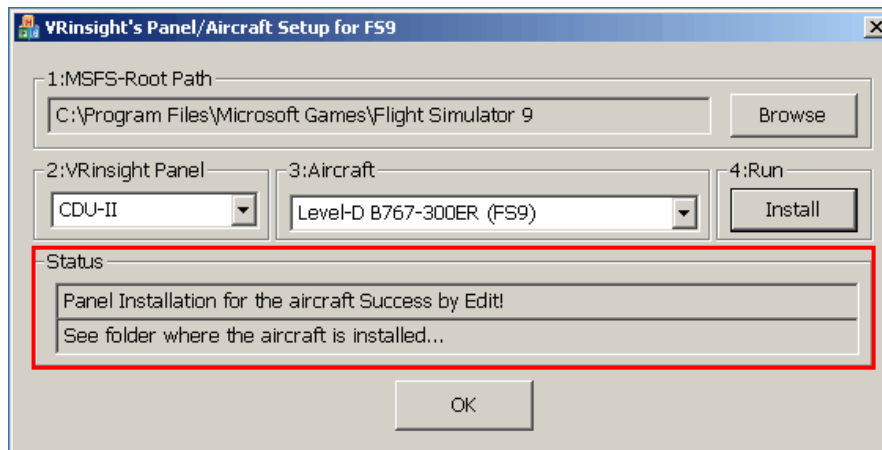
Run :Click “Install” to copy the necessary panel data to use Propit.

* If you select an aircraft for FS9 and the “MSFS–Root Path” is for FSX, “Status” window displays error message and all necessary panel data will not be copied. And vice versa.



5. Status : Inform current status.

* If everything is done properly, you will get below message



Preparing *ProPit* before Flight

Step 1 : Initial check

Before the first use of your Propit panel, please check the following:

- A. Install SerialFP2.
 - * Make sure that “Install USB–Serial Driver” is checked.
- B. Check the USB connection.
 - * If you use a USB hub, it must be USB 2.0 compliant.
- C. Make sure the DC 12V adaptor is plugged in.
- D. Check the DVI or VGA connection.
- E. check the monitor setting. (See page no. 7)
- F. Make sure that “Panel Installer” has been properly executed.

Step 2 : Run flight simulator (MSFS9 / MSFSX)

Select your aircraft.

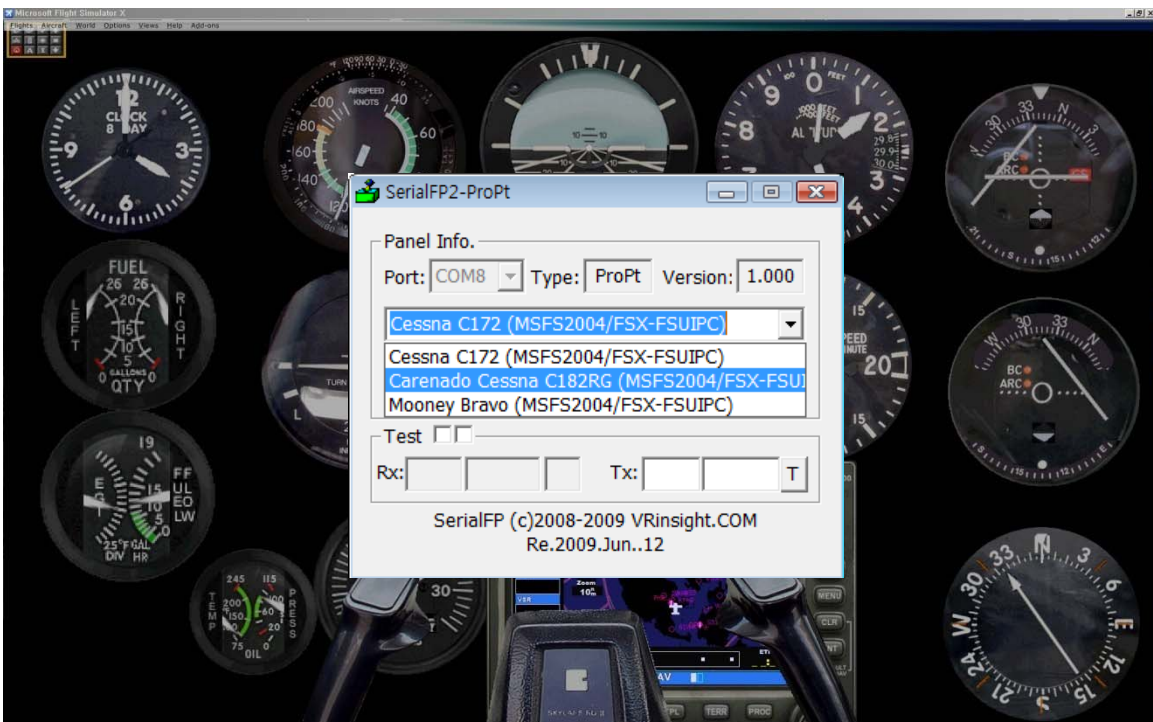


Initial screen of MSFS will be shown like pic 1. Then undock it.



Pic 1

Step 3. Go to your Windows desktop and run SerialFP2 . Select your aircraft and press “Load FS Module” like pic 2.



Pic 2

Step 4. Confirm all gauges are move to ProPit like pic 3.



Pic 3

Step 5. If all gauges are still in MSFS9 / MSFSX window like pic 4, it means



Pic 4

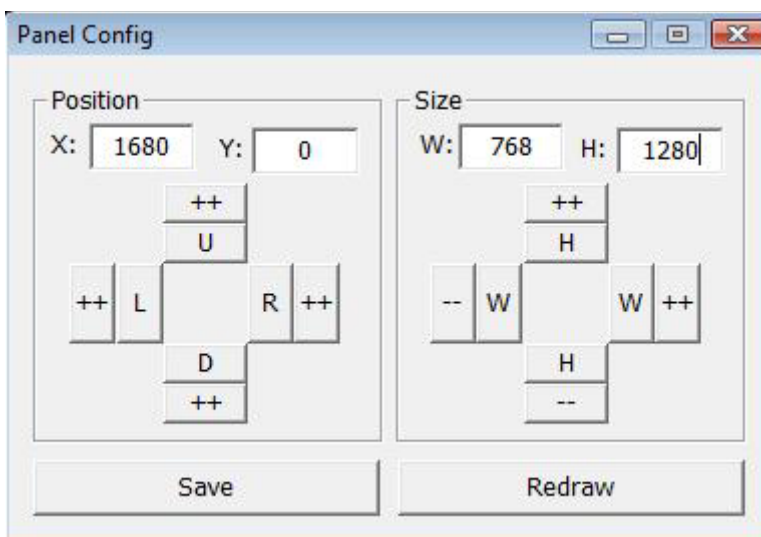
that you have to re-position the gauges display.

You can re-position the gauges display by “Panel Config” window. Find the minimized “Panel Config” window at the bottom of your monitor like pic 5.



Pic 5

Step 7. Input the X & Y position of sub monitor for ProPit and press “Redraw”.



* For instance,
If X & Y position is same
as page 8,
Put X=1680, Y=0.

If X & Y size is same as
page 8, Put W=768,
Y=1280.

ATTENTION : The values may vary according to your configuration. Experiment until the optimal settings are found.

You can also move and size the CDU Panel using the arrow keys :

X, Y	Current position of gauges display window
++ U	Moves gauges display window to up
++ D	Moves gauges display window to down
++ L	Moves gauges display window to left
++ R	Moves gauges display window to right
W, H	Current size of gauges display window
++ H	Expands in up & lower gauges shape
-- H	Reduces in up & lower gauges shape
++ W	Expands in left & right gauges shape
-- W	Reduces in left & right gauges shape
Redraw	Execute current settings
Save	Save all settings.

Step 8. Press “Save” to save your settings