

CDU II panel

USER MANUAL

(MEG2.520-10JULY09)

Please read this manual before operating your units and keep it for future reference.

VRinsight

Virtual Reality Insight

All stated here is subject to change without advanced notice for improvement.
Tel : +82-31-284-7090~91 Fax : +82-31-284-7092 E-mail : tech@vrinsight.com Web site : www.vrinsight.com

BEFORE USE : Thanks for purchasing VRi's CDU II panel.

Before operating your units, please read through this manual and keep it for future reference.

For any further question, visit www.wilcopub.com or contact us below:

Fax : +32-2-33107 51

E-mail (Support team) : info@wilcopub.com

NOTE : This manual could be redistributed unless you modify the contents. This manual has been written out on a Serial FP v2/Jet Liner's CDU II panel basis.

All software (& software versions) stated here (MEB2.520-10JULY09) is subject to change without advanced notice for improvement.

If you want to download the latest driver version for panel & application programs, visit www.wilcopub.com

VRinsight CDU II panel



The **CDU II panel** of VRinsight features Control Display Unit for Flight Management Computer(FMC). Real shape & full functionality of **CDU II panel** supports various types of most commercial add-on aircrafts ; Level-D, PMDG, Wilco & PSS. It is completely interfaced with MSFS9 and MSFSX through interfacing application software “SerialFP2” (supplied). Requires USB 2.0 port , unregistered FSUIPC and a free DVI or VGA port

- Standalone type
- **SerialFP2** software supports all functions to **CDU II panel**.
- If you want to use a USB hub, be sure that the USB hub is USB 2.0 compliant. Otherwise it may cause a malfunction.

Features

- Realistically shaped and fully functional
- All necessary buttons and LCD getting close to real flight
- Offer actual flight circumstance via CDU II panel with full control complement
- Visible LCD space : 9.1cm (L) X 8.4cm (W) / 4.8 inch
- Fully metal cases
- Standalone type
- One year warranty

Technical specifications

- USB interface type to computer
- External power requirement ; DC 12V adaptor (Included in package)
- Video port requirement : One DVI or VGA video port
- 14 cm (L) x 20.5 cm (W) x 10 cm (H)
- 3.5Kg

Compatibility software

- Flight Simulator 2004 / FSX by Microsoft

Operating software

- SerialFP2

BEFORE USE

Before use CDU II panel, please check below procedures.

1. SerialFP2 Installation

In the CDU II panel package, one “Install DVD” is included. When you insert it in DVD driver of your computer, “*VRinsight HTML*” document will be shown. Then click “SerialFP2” (operating software) and install it at a proper folder. “SerialFP2” is the main operating software of VRinsight used for all VRinsight flight panels.

SerialFP2 software supports all functions of CDU II panel and completely interfaced with MSFS9 and MSFSX enables full simulation with simple connection your computer through USB.

Be sure that when installing SerialFP2, “Install USB-Serial Driver” must be checked.

After installation, you can find “SeiralFP2” in “All programs” of “Start menu”.

2. USB Connection

The connection between CDU II panel and your computer is made using a USB cable that plugs into one USB port on your computer. **If you want to use a USB hub, be sure that the USB hub is USB 2.0 compliant. Otherwise it may cause a malfunction.**

When you connect CDU II panel to your computer at first, your computer will detect it and will describe the process step by step.

3. Power Connection

Power supplying of CDU II panel is done by universal power supply adaptor DC 12V (Included in package).

4. Video Connection

The connection between CDU II panel and your computer is made using DVI or VGA cable.

5. Download & install “FSUIPC”

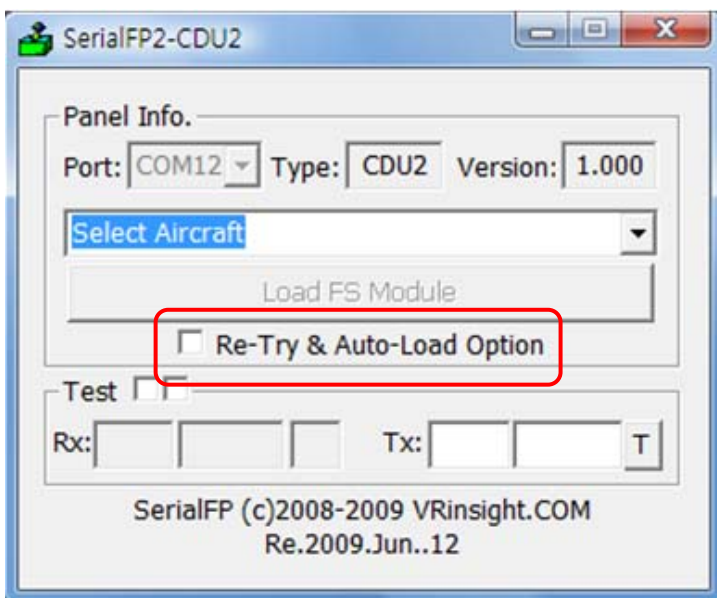
Refer to “Download & install FSUIPC” at “Download” part of www.vrinsight.com

Double click the shortcut of “SerialFP2” or find it in “All programs” of “Start menu .
If everything is done properly, below window will be shown.



Run MSFS9 / MSFSX and run SerialFP2. Drop down “Select Aircraft” to select aircrafts and press “Load FS Module” button.

- Before operate CDU II panel, check “Re-Try & Auto-Load Option”.
- “Re-Try & Auto-Load Option” will help not to run FS9/FSX first. And it will retry to check the port of your device when SerialFP2 doesn't find the Com port.

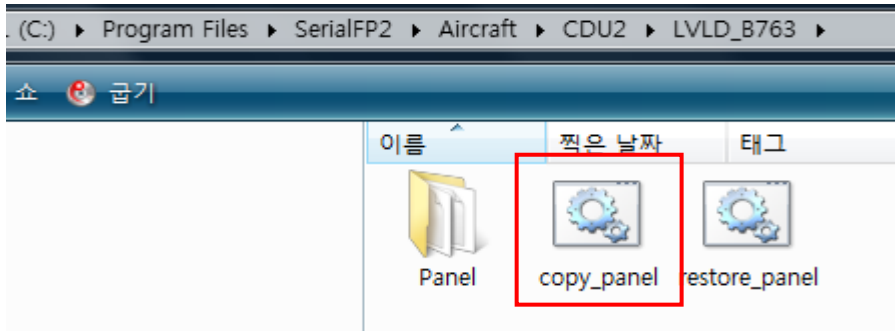


Before use

Important

A. Execute "copy_panel" for your aircraft before using CDU II panel.

Example with "Level-D" for MSFS9



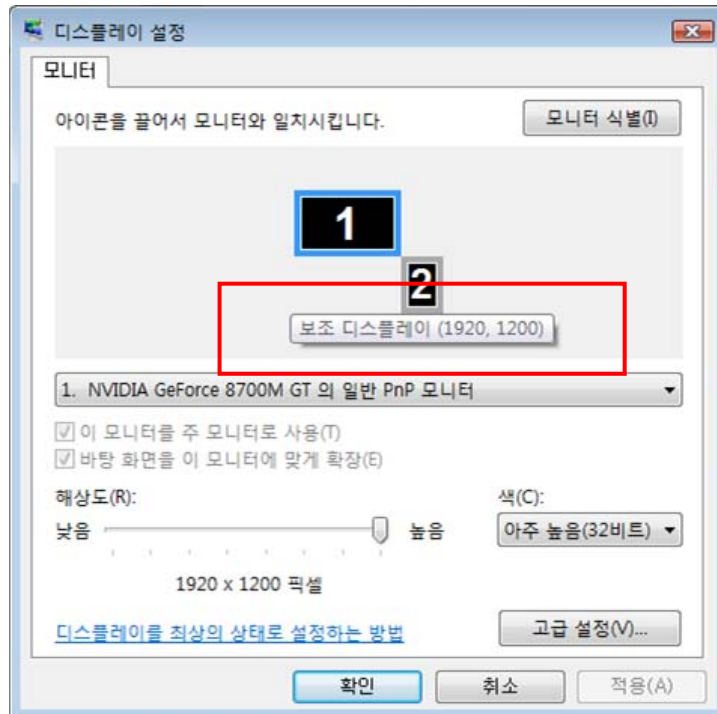
- If you want to restore the cockpit view, execute "restore_panel"
- If the SerialFP2 directory doesn't have "copy_panel", it means your software is not the latest. Please visit www.wilcopub.com and download the latest version.
- **If you use Window VISTA, VRinsight recommend running all programs & software by "Run as Administrator". Since Window VISTA could recognize all programs & software related to "SerialFP2" as an unknown software.**

B. Rotate CDU II screen as follow;

NDVIA : Go to "NDVIA control panel" and rotate CDU II screen to "Right 90° clockwise".

ATI : Go to "Catalyst Control Center" and rotate CDUU II screen to "Right (90° cw)".

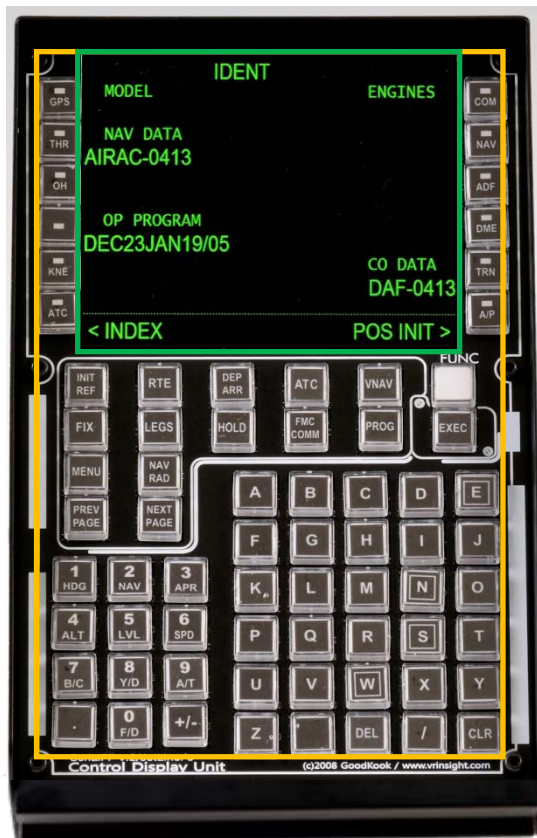
C. Setup the position of CDU II monitor as follow;



Remember the position of sub
monitor is X=1920 Y=1200

* X, Y position may differ according to the resolution of your main monitor.

CDU II controls explanation (based on Boeing)



LCD display : Shows all information about FMS



Buttons : Buttons are used to input & assign the data and enter the pages



LCD display : Shows all information about flight

**INIT
REF**

Provides manual and preflight initialization of the FMC and access to various pages of reference data

RTE

Used to enter information on aircraft's route

**DEP
ARR**

Used to select departure/arrival pages for the origin and destination airport for each route

ALTN

Allows selection of alternative airports and display of related information

VNAV

Provides vertical navigation profile guidance of all phases of flight

FIX

Used to create waypoint fixes and waypoints for display on the ND

LEGS

Provides information about each LEG segment of the route

HOLD

Used to enter a HOLD pattern into the route

FMC

Flight Management Computer Communication

**PRO
G**

Provides general flight progress information

**MEN
U**

Provides access to other system and menus that use the CDU





**NAV
RAD**

Display radio tuning information and provides for manual operation of the Navigation Radio

**PREV
PAGE**

Returns to the previous CDU page

**NEXT
PAGE**

Advances to the next CDU page

Alphabet & Numeric buttons : Allows the flight crew to type in commands and data into the CDU

SP

Displays a space between words or data

DEL

Displays DELETE in the scratchpad. Is used to delete commands and data from CDU

CLR

Clears the scratchpad

N

North key input

E

East key input

S

South key input

W

West key input

.

Displays an asterisk(*) in the scratchpad



EXEC

Sends the information to **F**light **M**anagement **C**omputer .

Preparing CDU II panel before Flight

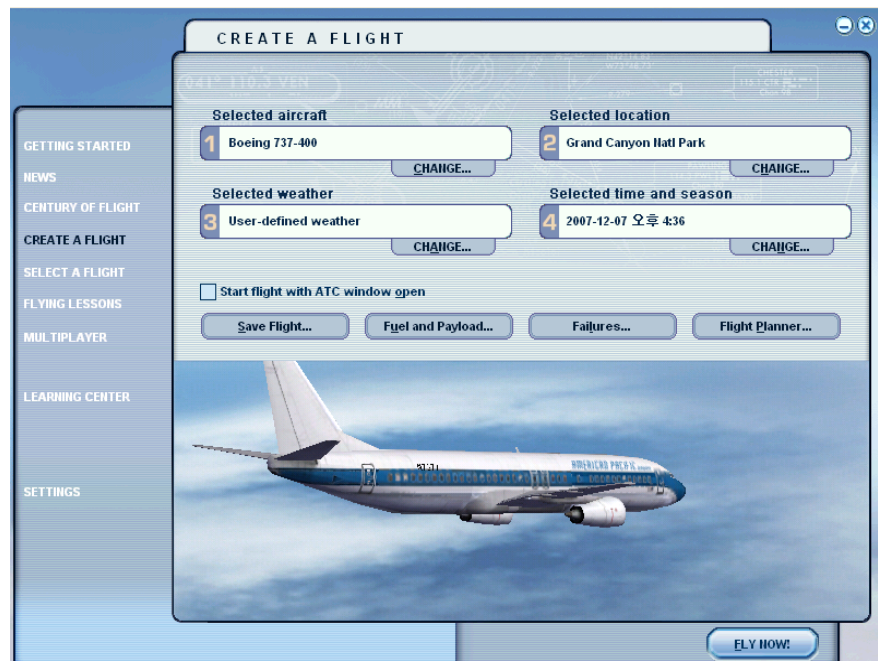
Step 1 : Initial check up

Before flight with CDU II panel, please check the followings are done

- A. Install of SerialFP2.
 - * Check that “Install USB-Serial Driver” is checked or not.
- B. Confirm the USB connection.
 - * Check that the USB port of your computer is dead or not
 - * Check that if you use USB hub, it is compliant with USB 2.0 standard or not.
- C. Confirm DC 12V adaptor is plugged in.
- D. Confirm the DVI or VGA connection.
- E. Confirm the monitor setting. (See page no. 7)
- F. Confirm that “panel_copy” is executed or not.
- G. Confirm that proper version of FSUIPC is installed or not
(FSUIPC v3.80 or late for FS9 / FSUIPC v4.26 or later for FSX)

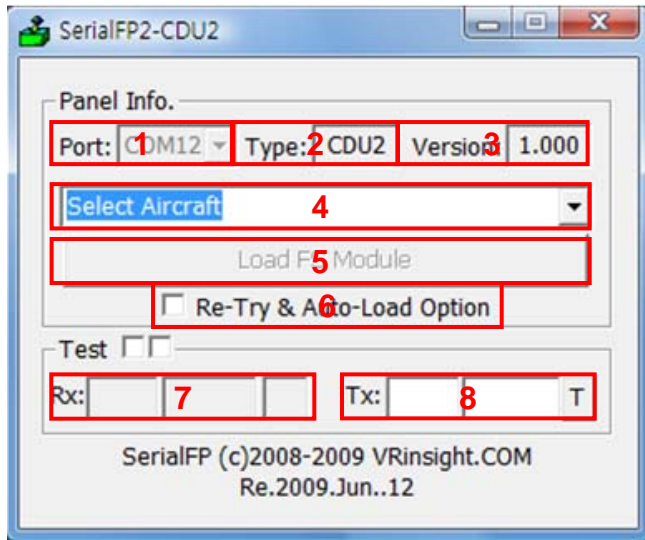
Step 2 : Run flight simulator (MSFS9 / MSFSX)

- A. Run flight simulator (MSFS9 / MSFSX).
- B. Select Aircraft.



Step 3 : Run panel linking application software “SerialFP2”.

Run application software “SerialFP2.exe”. **Be sure that flight simulator is already started.**



- 1 : Number of COM(USB) port
- 2 : Type of panel
- 3 : Firmware version
- 4 : Aircraft selection
- 5 : Link to game
- 6 : Software loading sequence change
Original sequence
(MSFS loading first => SerialFP2 running)
New sequence
(MSFS loading / SerialFP2 running first
=> Serial FP2 running / MSFS loading)
- 7 : Input test for panel
- 8 :Link test for panel with game

Step 4 : Undock “FMC” window.

Place the cursor on the FMC and press right button to undock

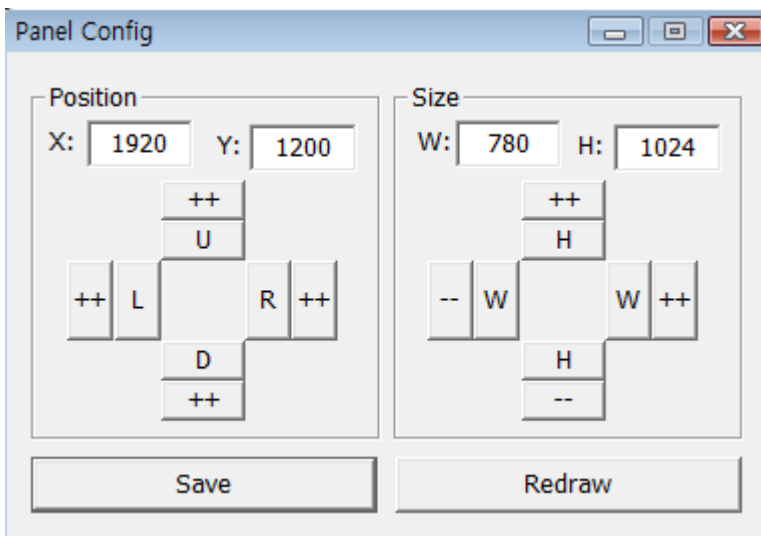
If you can't see the FMC, please go to page No. 13 “Initial check up”.





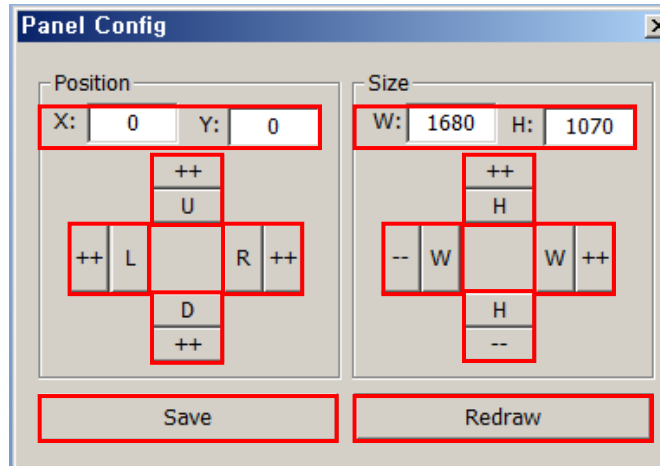
Step 5. Press “Load FS Module” to move undocked FMC display to CDU II panel.

Step 6. Input the X & Y position of CDU II monitor and press “Redraw”



* For instance
 If X & Y position is
 same as page 8.
 Put X=1920, Y=1200
 instead current value
 of X & Y position

Step 8. Confirm the FMC display has been moved to CDU II panel. Then press “Save” for future purpose. With “Panel Config” window, you can adjust position and size of the display. See how to control them.



X, Y	Current position of gauges display window
++ U	Moves gauges display window to up
++ D	Moves gauges display window to down
++ L	Moves gauges display window to left
++ R	Moves gauges display window to right
W, H	Current size of gauges display window
++ H	Expands in up & lower gauges shape
-- H	Reduces in up & lower gauges shape
++ W	Expands in left & right gauges shape
-- W	Reduces in left & right gauges shape
Redraw	Execute current settings
Save	Save all settings.