

# M panel<sup>TM</sup>

## USER MANUAL

(MEF1.000-26OCT09A)

**Please read this manual before operating your  
units and keep it for future reference**

# VRinsight

*Virtual Reality Insight*

**All stated here is subject to change without advanced notice for improvement.**

Tel : +82-31-284-7090~91 Fax : +82-31-284-7092 E-mail : [tech@vrinsight.com](mailto:tech@vrinsight.com) Web site : [www.vrinsight.com](http://www.vrinsight.com)

## VRinsight M panel



The **M panel** of **VRinsight** is a portable package to control and display fundamental functions for flight. And it features various type of aircrafts' panel; built-in MSFS aircraft and most freeware or commercially available add-on aircraft. It is completely interfaced with MSFS9 and MSFSX through add-on software “[SerialFP2](#)” which enables **M panel** to perform full simulation with simple connecting PC through USB.

The **M panel** of **VRinsight** is comprised of fundamental function of MCP, COM and GEAR UP/DOWN & FLAP UP/DOWN function for flight without full system.

- **SerialFP2** software supports all functions to **M panel**
- If you want to use a USB hub, be sure that the USB hub must compliant with USB 2.0 standard. Otherwise it may cause a malfunction.

**BEFORE USE** : Thanks for purchasing VRi's M panel.

Before operating your units, please read through this manual and keep it for future reference. For any further question, visit VRi's web-site ([www.vrinsight.com](http://www.vrinsight.com)) or contact as below;

**Tel** : +82-31-284-7090 (7091)

**Fax** : +82-31-284-7092

**E-mail (Support team)** : [tech@vrinsight.com](mailto:tech@vrinsight.com)

**NOTE** : This manual could be redistributed unless you modify the contents.  
This manual has been written out on a M panel basis.

All software (& software versions) stated here (MEF1.000-26OCT09A) is subject to change without advanced notice for improvement.

If you want to download the latest driver version for panel & application programs, visit [www.vrinsight.com](http://www.vrinsight.com)

## Box contents



## **Features**

- Portable package with fundamental functions for flight
- Buttons and knob on the panel;
  - AUTOPILOT CRTL : HDG, SPD, BARO, ALT, V/S buttons and knobs
  - AUTOPILOT MODE : NAV, APR, BC, A/T, F/D, Engage Auto-Pilot buttons
  - Instrument Radio : COM1 & 2, NAV1 & 2, ADF1 & 2, DME1 & 2 with OBS knob
  - USER MODE : TRIM, GEAR UP/DOWN, FLAP UP/DOWN are set as default
  - Marker OMI display LED
  - Gear UP/DOWN toggle switch with LED display
  - FLAP UP/DOWN toggle switch with LED display
- LCD display for 4 different modes
- Full metal cases
- One year warranty

## **Technical specifications**

- USB interface type to computer
- 17cm (L) \* 10cm (W) \* 9cm(H)
- 0.7Kg

## **Operating software**

- SerialFP2

## **Compatibility software**

- Flight simulator 2004 / FSX by Microsoft

## **SerialFP2 Installation**

With M panel, an “Install DVD” is included. When you insert it in DVD driver of your computer, “*VRinsight HTML*” document will be shown. Then click “SerialFP2” (operating software) and install it at a proper folder.

“SerialFP2” is the main operating software of VRinsight used for all VRinsight flight panel.

SerialFP2 software supports all functions of M panel and completely interfaced with MSFS9 and MSFSX enables full simulation with simple connection to your computer through USB.

**Be sure that when installing SerialFP2, “Install USB-Serial Driver” must be checked.**

After installation, you can find “SeiralFP2” in “All programs” of “Start menu”.

## **USB Connection**

The connection between M panel and your computer is made using a USB cable that plugs into one USB port on your computer. **If you want to use a USB hub, be sure that the USB hub is USB 2.0 compliant. Otherwise it may cause a malfunction.**

When you connect M panel to your computer at first, your computer will detect it and will describe the process step by step.

## **Power Connection**

Power supplying of M panel is done by USB port of your computer. Make sure that before trying to operate M panel, you must confirm the USB connection first in order to prevent malfunction.

Before trying to operate, be sure that LCD displaying is shown.

## **Run “SerialFP2”**

When you confirm all setup processes done; “SerialFP2” installation, “USB connection” and “Power connection”, you are ready to operate M panel.

## **Download & install “FSUIPC”**

Refer to “Download & install FSUIPC” at “Download” part of [www.vrinsight.com](http://www.vrinsight.com)

FS 9 requires FSUIPC v3.80 or later. FSX requires FSUIPC v 4.26 or later.

Double click shortcut of “SerialFP2” or find it in “All programs” of “Start menu .  
If everything is done properly, below window will be shown.



## Controls & Displays for each part



**LCD display** : Displays all information of M panel



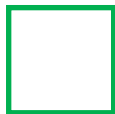
**Marker OMI LED display** : Indicates OMI signal



**Rotary knob, Function switch, AP engage or TFR button** :  
Decides function mode, AP engagement or TFR swap active & standby frequency



**GEAR UP/DOWN and FLAP UP/DOWN toggle switch** :  
Decides and displays GEAR UP/DOWN & FLAP UP/DOWN



**Controllable buttons** : COM/HDG, NAV/SPD, ADF/BARO, DME/ALT, TRN/VS, NAV/LOC, APR/GS, BCRS, AT, FD



**LCD display** : Displays all information of M panel



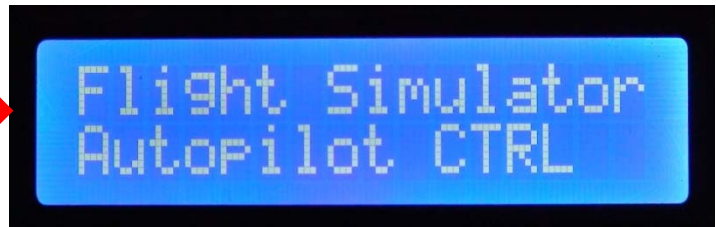
Initial LCD display after connection to your computer

With mode select button, you can control your aircraft as following mode;

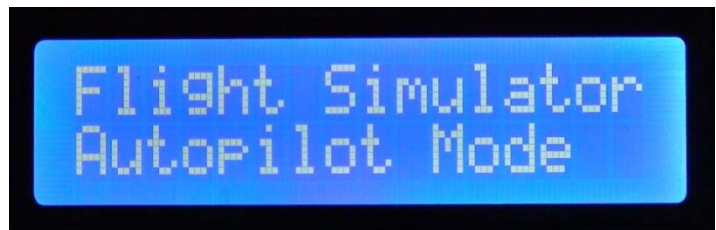
Radio Stack mode



Autopilot control mode



Autopilot mode



User mode

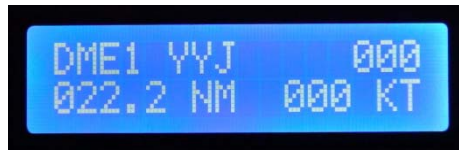
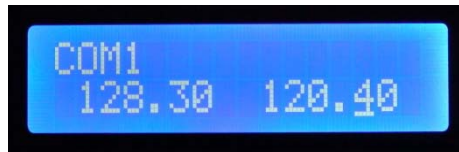




Radio Stack mode



**Radio Stack mode :** Push the Mode select button to upper and then you control **COM, NAV, ADF, DME, TRANSPONDER.**



**Radio Stack mode**

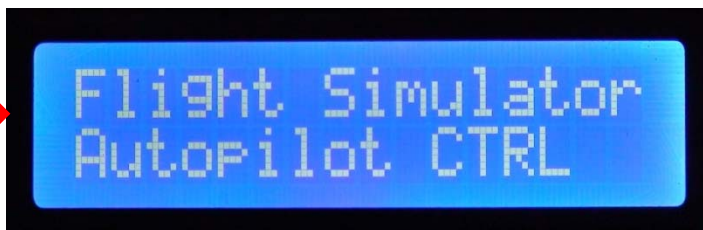


Rotating : Changes the frequency of COM, NAV, ADF. Changes DME & Transponder.  
 Pushing : Blinks the frequency(MHz : 1MHz unit) / the frequency (KHz : 25KHz unit) to change at.

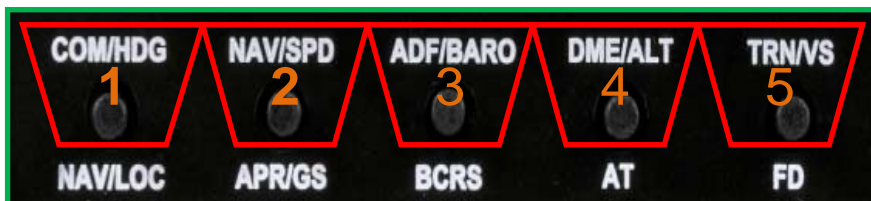


Pushing (Only for COM / NAV) : Swaps active and standby frequency.

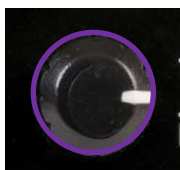
**Autopilot control mode**



**Autopilot control mode** : Push the Mode select button to right and then you control **HDG, SPD, BARO, ALT, V/S**.



**At the Autopilot control mode, LCD display displays only 4 information (HDG, SPD, ALT, BAR). Pressing V/S will swap the display of BARO to V/S and vice versa.**

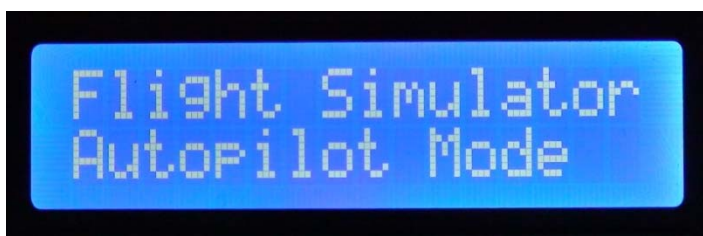


Rotating : Changes the value of HDG, SPD, ALT, BAR, V/S.  
 Pushing : Holds current values or release current hold values.

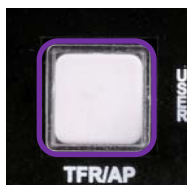


**\* Above picture shows HDG, ALT are hold**

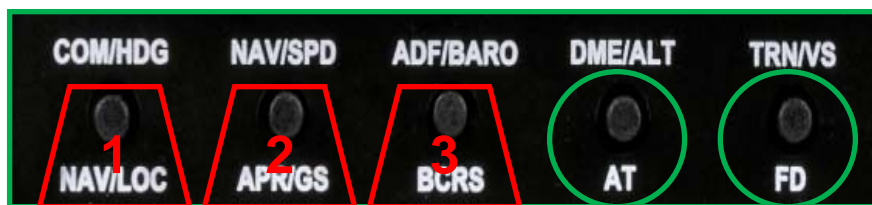
Autopilot mode



**Autopilot control mode** : Push the Mode select button to lower and then you can engage AP, AT, FD.

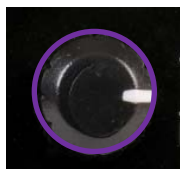


Pushing : Engages Autopilot or disengages.



Pushing AT/FD engages AT/FD or disengages AT/FD

Pushing **1** **2** **3** activates NAV,APR,BCRS.



Pushing : Increases / decreases throttle.

User mode



**User mode** : Push the Mode select button to left and then you can control TRIM, Gear UP/DOWN & Flap UP/DOWN.



Rotating : Increases / decreases TRIM.



Toggle switch up/down : Controls Gear up/down & Flap up/down.

**LCD display of Gear up/down & Flap up/down are displayed in percentage.**



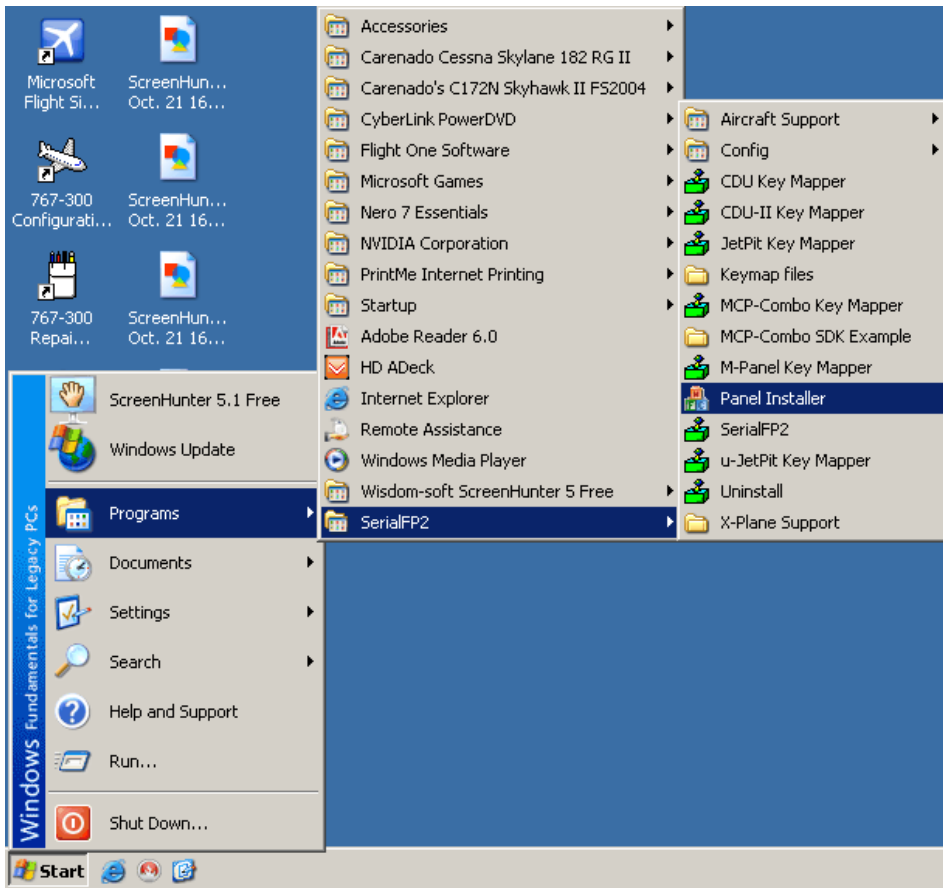
**Marker OMI LED display** : Indicate OMI signal

## Panel installer launch

: Panel installer will copy & paste all necessary panel data to work M panel automatically. Be sure “Panel Installer” should run before running SerialFP2.

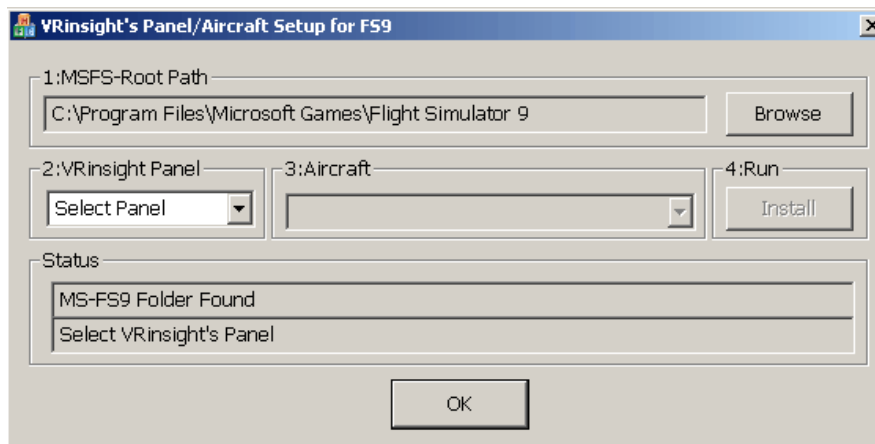
**\* Once the panel is installed, aircraft configuration is kept.**

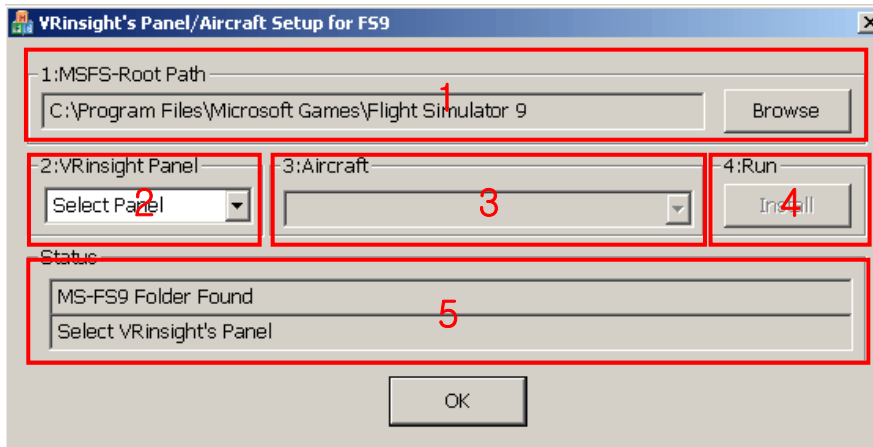
After “SerialFP2” installation, you can find “Panel Installer”.



## How to use “Panel Installer”.

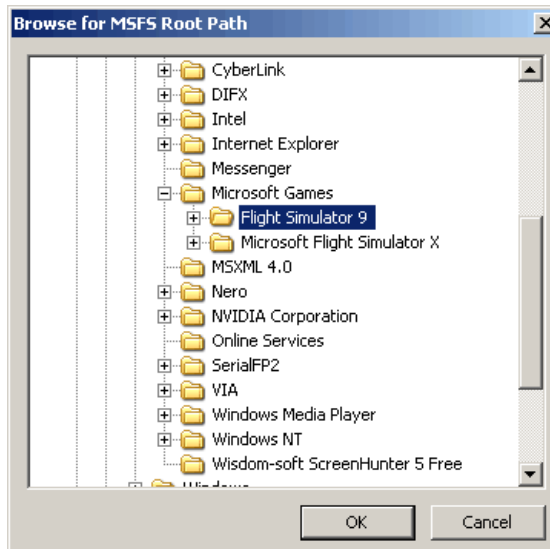
Run “Panel Installer” first



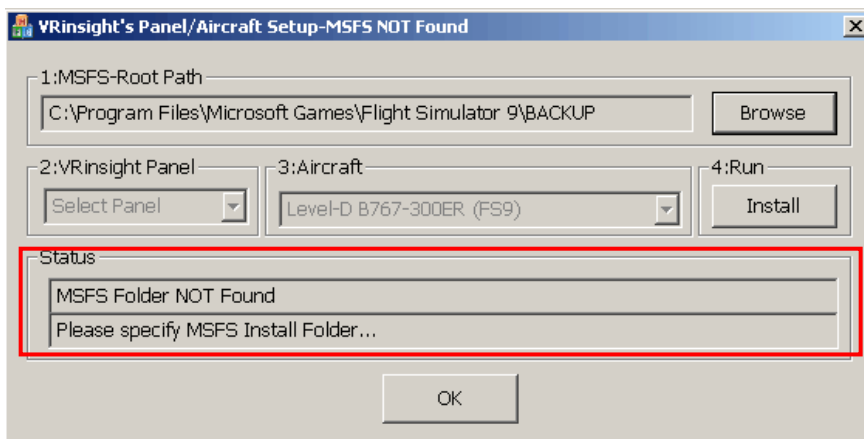


**1. MSFS-Root Path** : Browse the path where “Flight Simulator 9” or “Microsoft Flight Simulator X” is installed.

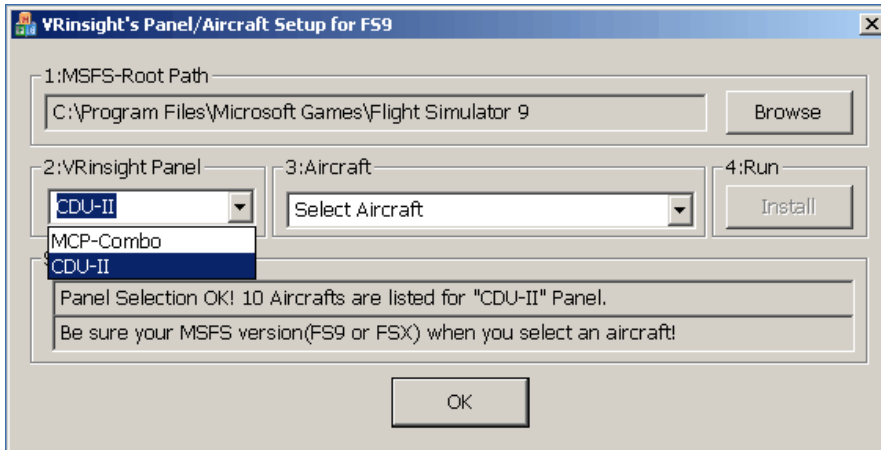
\* If “Flight Simulator 9” or “Microsoft Flight Simulator X” is installed other “Drive” or “Directory”, find the path and click “OK”.



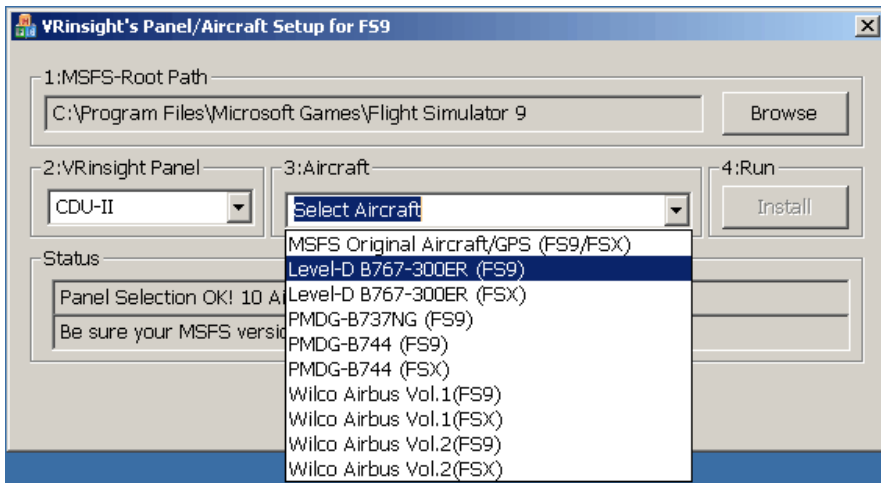
\* if you select a wrong path, “Status” window displays error message.



2. VRinsight panel : Drop down and select your panel.

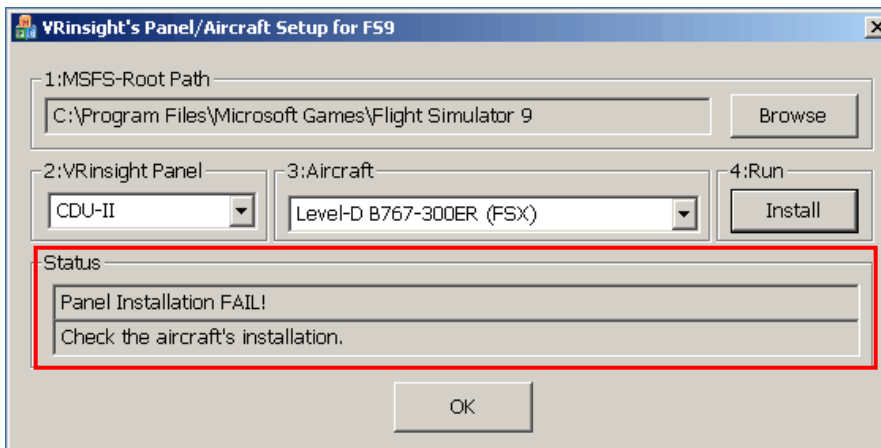


3. Aircraft : Drop down and select your aircraft.



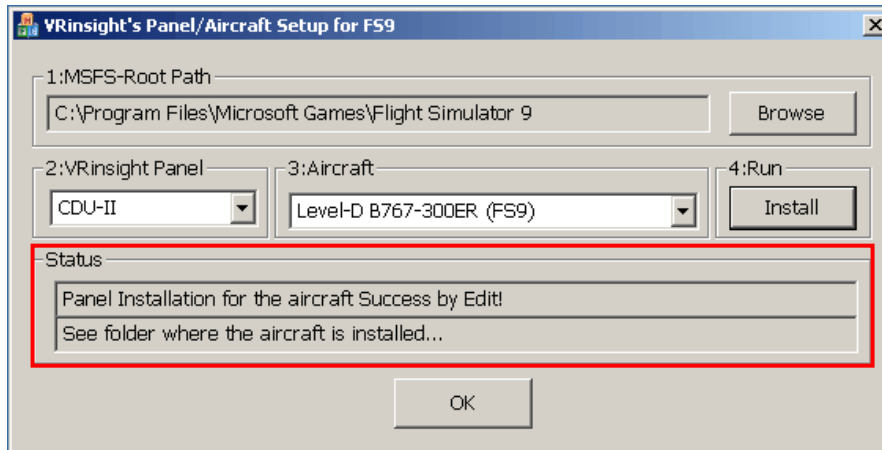
4. Run : Copy & paste all necessary panel data to work M panel automatically.

\* If you select an aircraft for FS9 and the "MSFS-Root Path" is for FSX, "Status" window displays error message and all necessary panel data will not be automatically copied & pasted. And vice versa.



5. **Status** : Inform current status.

\* If everything is done properly, you will get below message.





## Preparing M panel before Flight

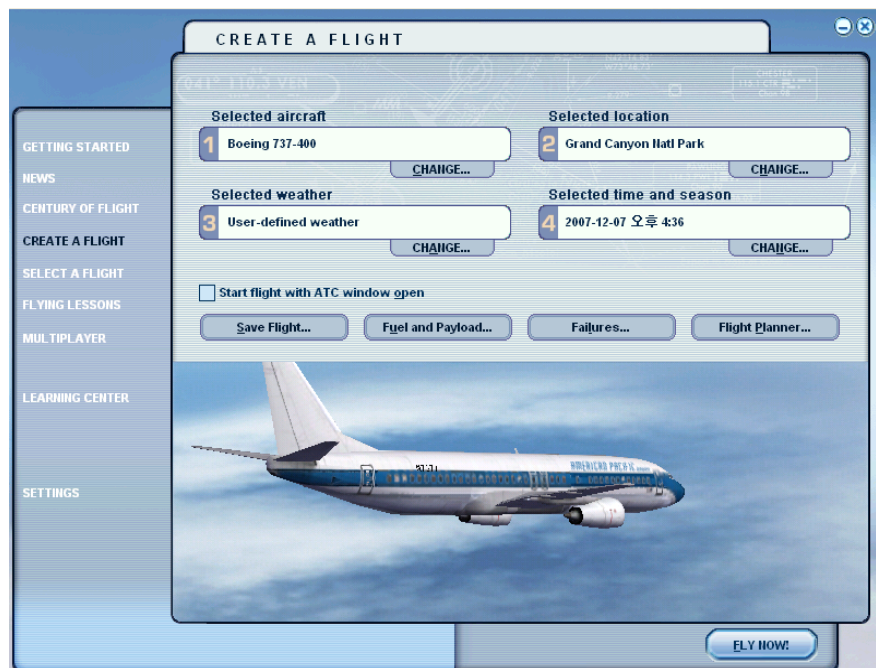
### Step 1 : Initial check up

Before flight with M panel, please check the followings are done

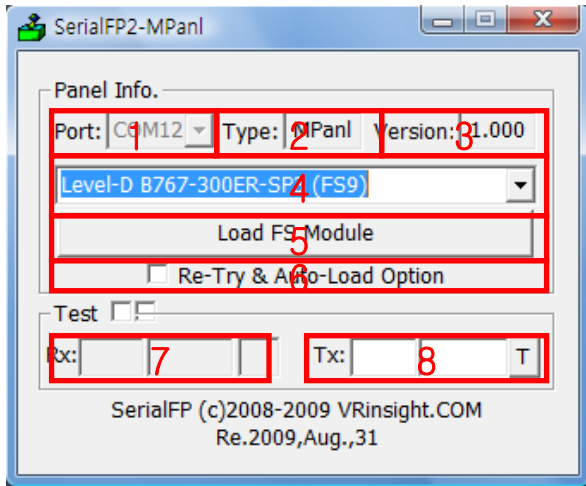
- A. Install of SerialFP2.
  - \* Check that “Install USB-Serial Driver” is checked or not.
- B. Confirm that proper version of FSUIPC is installed or not (FSUIPC v3.80 or later for FS9 / FSUIPC v4.26 or later for FSX)
- C. Confirm the USB connection.
  - \* Check that the USB port of your computer is dead or not
  - \* Check that if you use USB hub, be sure that the USB hub is USB 2.0 compliant.
- D. Confirm that “Panel Installer” is executed or not.

### Step 2 : Run flight simulator (MSFS9 / MSFSX)

- A. Run flight simulator (MSFS9 / MSFSX).
- B. Select Aircraft.

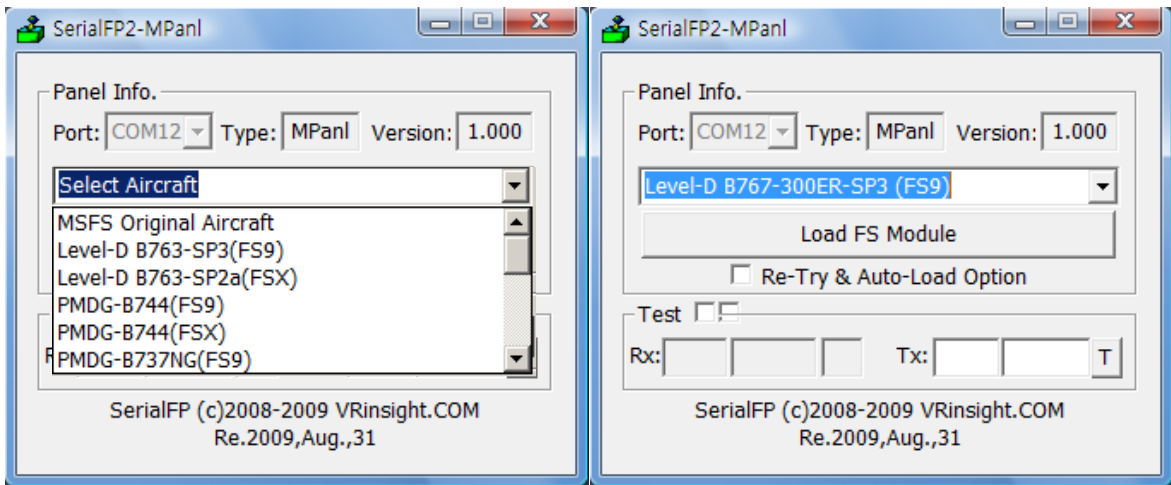


### Step 3 : Run panel linking application software “SerialFP2”.



- 1 : Number of COM(USB) port
- 2 : Type of panel
- 3 : Firm ware version
- 4 : Aircraft selection
- 5 : Link to game
- 6 : Software loading sequence change  
Original sequence  
(MSFS loading first => SerialFP2 running)  
New sequence  
(MSFS loading / SerialFP2 running first  
=> Serial FP2 running / MSFS loading)
- 7 : Input test for panel
- 8 : Link test for panel with game

Drop down “Select Aircraft” and press “Load FS Module”.



## **Button & Rotary knob assignment**

The predefined button & Rotary knob assignments of all aircrafts supported are located at C:\Program Files\SerialFP2\Aircraft\MPanel.

## **Key mapping & Mouse key**

How to make your own key assignment by key-mapping & Mouse key is explained at "Panel Interface".

You can find it "Download" part of VRinsight web-site / [www.vrinsight.com](http://www.vrinsight.com).