

JetPitTM

USER MANUAL

(MEF1.000-26OCT09A)

**Please read this manual before operating your
units and keep it for future reference**

VRinsight
Virtual Reality Insight

All stated here is subject to change without advanced notice for improvement.

Tel : +82-31-284-7090~91 Fax : +82-31-284-7092 E-mail : tech@vrinsight.com Web site : www.vrinsight.com

VRinsight JetPit panel



The **JetPit panel** of **VRinsight** is a control and screen system for jet type aircrafts. All displays are synchronized with Microsoft's Flight Simulator, supporting the default jet type aircrafts of MSFS and most add-on jet type aircrafts. JetPit panel displays the primary flight information of PFD, ND, MCP, EFIS, EICAS and CDU with full functional rotation knob, push buttons giving for users to be experienced the most enthusiastic flight. It is completely interfaced with MSFS9 and MSFSX through add-on software "[SerialFP2](#)" which enables **JetPit** to perform full simulation with simple connecting PC through USB. Package including TFT LCD Monitor.

- **SerialFP2** software supports all functions to **JetPit** panel.
- **CDU function is not supported with the default jet type aircrafts of MSFS.**
- **MCP panel is limited to display. Data's cannot be changed.**
- If you want to use a USB hub, be sure that the USB hub is USB 2.0 compliant. Otherwise it may cause a malfunction.
- * **LCD monitor is subject to change without advanced notice for improvement.**

BEFORE USE : Thanks for purchasing VRi's JetPit.

Before operating your units, please read through this manual and keep it for future reference. For any further question, visit www.wilcopub.com or contact us below:

Fax : +32-2-33107 51

E-mail (Support team) : info@wilcopub.com

NOTE : This manual can be redistributed if you don't alter the content.
This manual has been written out on a JetPit panel basis.

All software (& software versions) stated here (MEF1.000-26OCTY09A) is subject to change without advanced notice for improvement.

If you want to download the latest driver version for panel & application programs, visit www.vrinsight.com

JetPit picture (JetPit with MCP combo panel)



Features

- Real type displays for the most Jet type aircraft cockpit.
- Displays on the panel; (Re-configurable windows)
 - PFD display
 - ND display
 - MCP display
 - EFIS display
 - EICAS display
 - CDU display
- Controls on panel;
 - CDU control
- User programmable buttons & Rotary knob;
 - Five 4-ways buttons
 - 14 push buttons
 - 1 Rotary knob
- Full metal enclosure
- One year warranty

Technical specifications

- USB interface to computer
- External power requirement (for 20.1" TFT LCD monitor: Resolution[1680 * 1050]):
110V / 220V **Outlet for TFT LCD monitor is European standard.**
- 48.5cm (L) * 33cm (H) : Height depends on the monitor type.
- 9Kg (with TFT LCD monitor)

Interfacing software

- SerialFP2

Compatibility software

- Flight simulator 2004 / FSX by Microsoft

SerialFP2 Installation

With JetPit, an “Install DVD” is included. When you insert it in DVD driver of your computer, “*VRinsight HTML*” document will be shown. Then click “SerialFP2” (operating software) and install it at a proper folder.

“SerialFP2” is the main interfacing software of VRinsight used for all VRinsight flight panels.

SerialFP2 software supports all functions of JetPit and completely interfaced with MSFS9 and MSFSX enables full simulation with simple connection your computer through USB.

Be sure that when installing SerialFP2 to check “Install USB-Serial Driver”

After installation, you can find “SerialFP2” in “All programs” of “Start menu”.



USB Connection

The connection between JetPit and your computer is made by using a USB cable that plugs into one USB port on your computer. **If you use a USB hub, be sure that the USB hub is USB 2.0 compliant. Otherwise it may cause a malfunction.**

When you connect JetPit to your computer, your computer will detect it and will describe the process step by step.

Power Connection

Power supply of JetPit keys and buttons is done by USB port and that of TFT LCD monitor is done by 110V / 220V free power cable.

Run “SerialFP2”

When all setup processes are done; “SerialFP2” installation, “USB connection” and “Power connection”, you are ready to operate JetPit.

Download & install “FSUIPC”

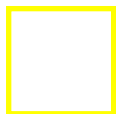
Refer to “Download & install FSUIPC” at “Download” part of www.vrinsight.com

FS 9 requires FSUIPC v3.80 or later. FSX requires FSUIPC v 4.26 or later

Controls & Displays for each part



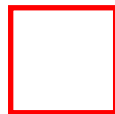
PFD display



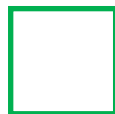
MCP display



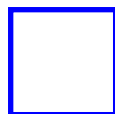
EICAS display & controls
with eight push buttons



ND display & controls
with three four-way
buttons



EFIS display & controls
with two four-way
buttons



CDU display & controls

Displays and default Push, Rotary and Control buttons

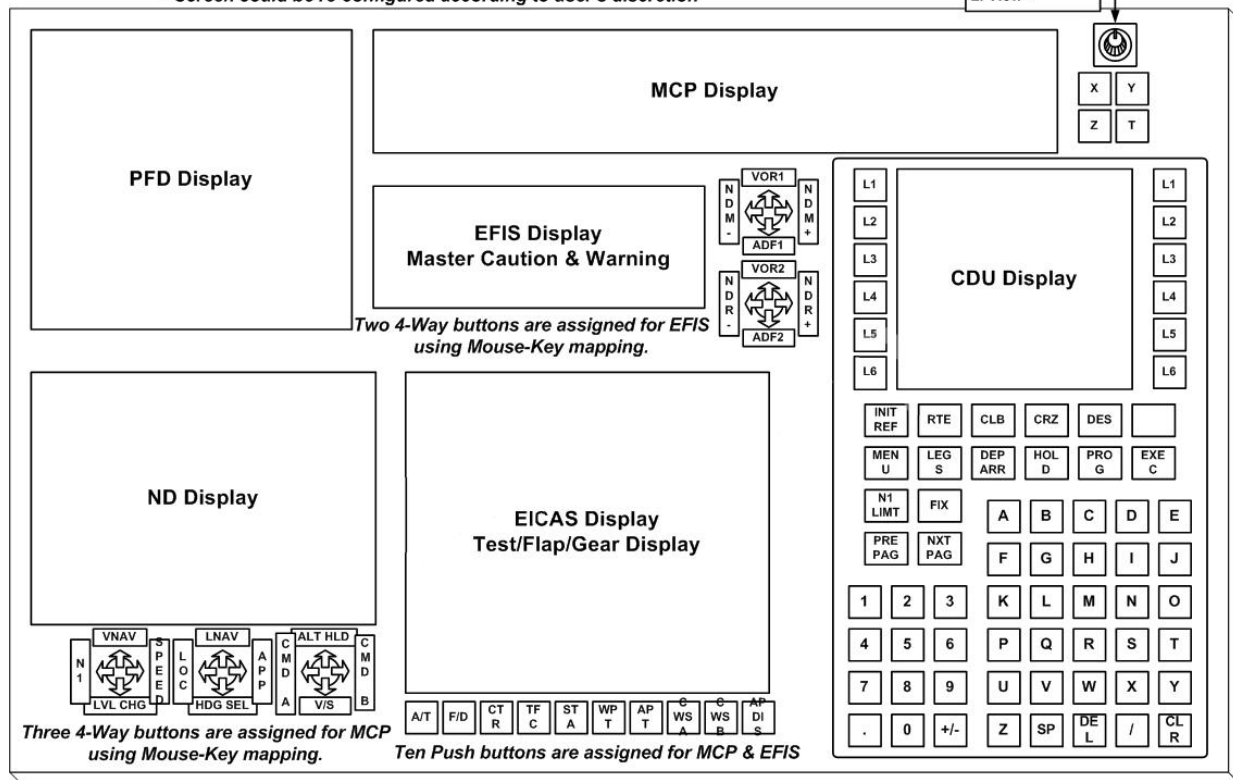
* All controllable buttons are reprogrammable for users' propose using Key Mapping software.

Aircraft Type: Boeing(PMDG, LVL-D, Wilco PIC, etc)

* Button controls are user programmable using Key Mapping S/W

** Screen could be re-configured according to user's discretion

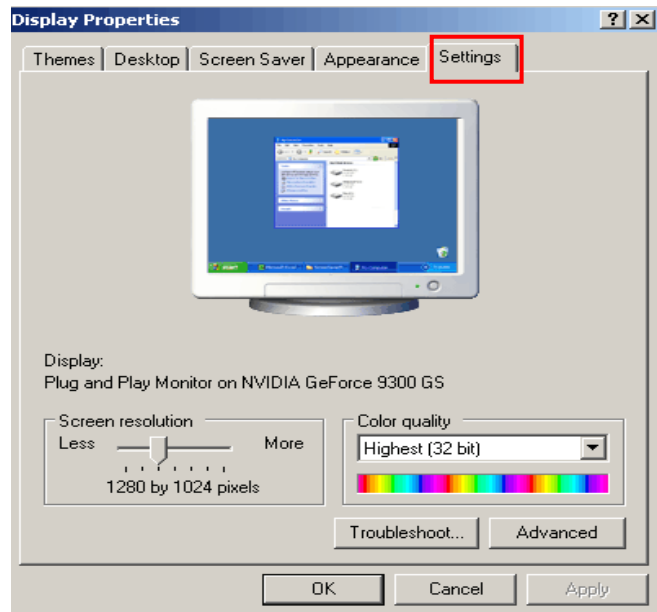
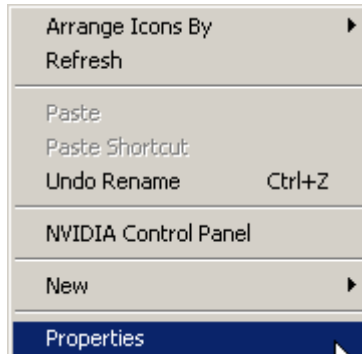
One Rotary knob and four push button for View Control



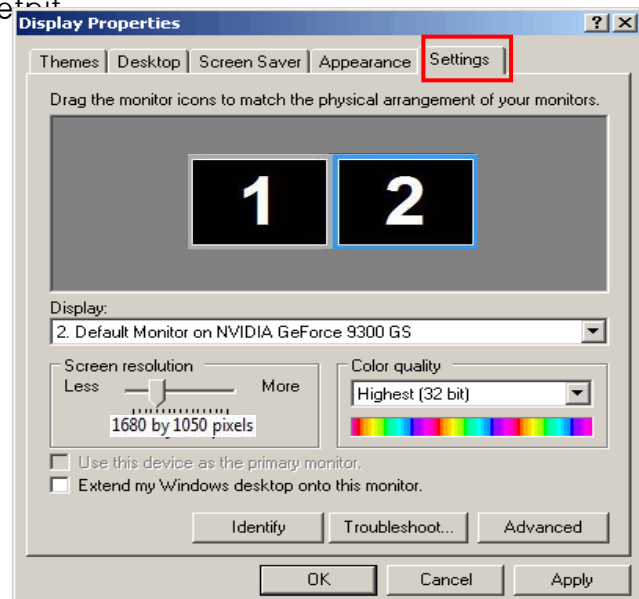
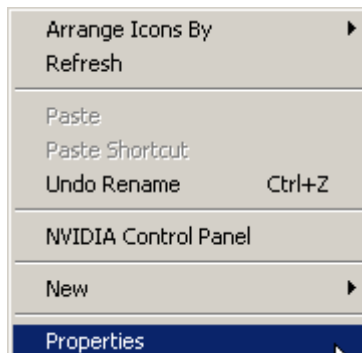
JetPit Panel from Vrinsight.COM / 2009-10-01

Monitor setting

1. Check the current display properties to identify the monitor(s) connected ("Settings" tab)

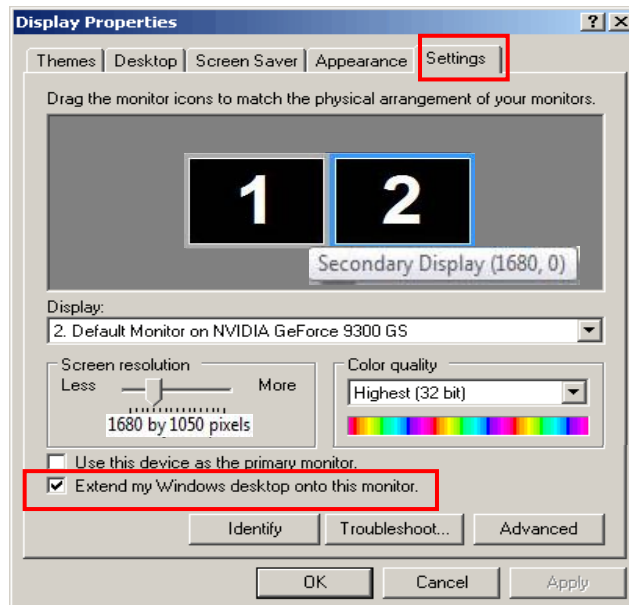


2. Connect video cable of Jetpit to your computer.
3. Connect AC/DC adaptor to your Jetpit.
4. If you run Windows Vista, restart your computer
4. The display properties should now be as shown hereunder, the second monitor being that of the Jetpit



* If the *JetPit* monitor (=Monitor 2) isn't detected, check the connection of video cable & AC/DC adaptor.

5. When the *JetPit* monitor is recognized, click monitor 2(=*JetPit* monitor).
6. Adjust the resolution for *JetPit* monitor.
(Recommended resolution is **1680 * 1050**).
7. Check the position of the monitor 2.
8. Check "Extend my Windows desktop onto this monitor".

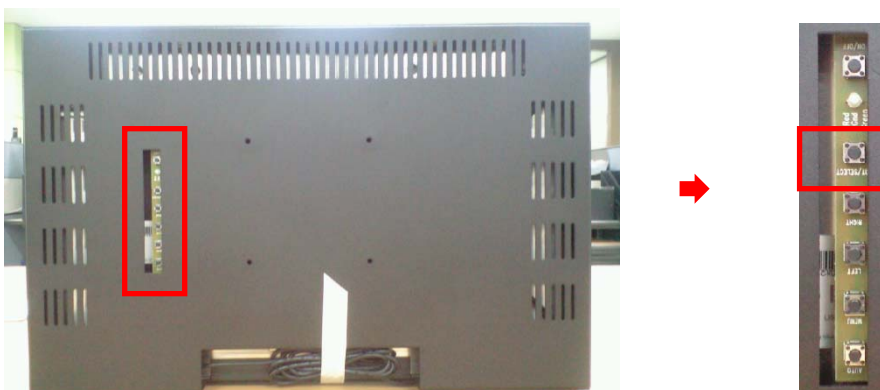


* If *JetPit* monitor doesn't illuminate, restart your computer.

9. Click "Apply" and click "OK"

10. If everything is done properly, *JetPit* will be powered on.

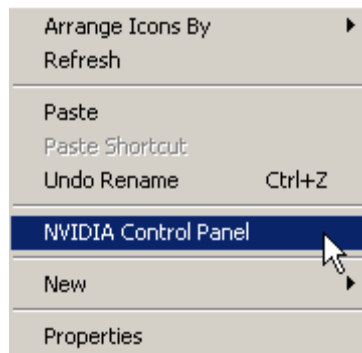
* If *JetPit* doesn't power on, restart your computer. And see if the indicator is red light on. If it is, press "select" button.



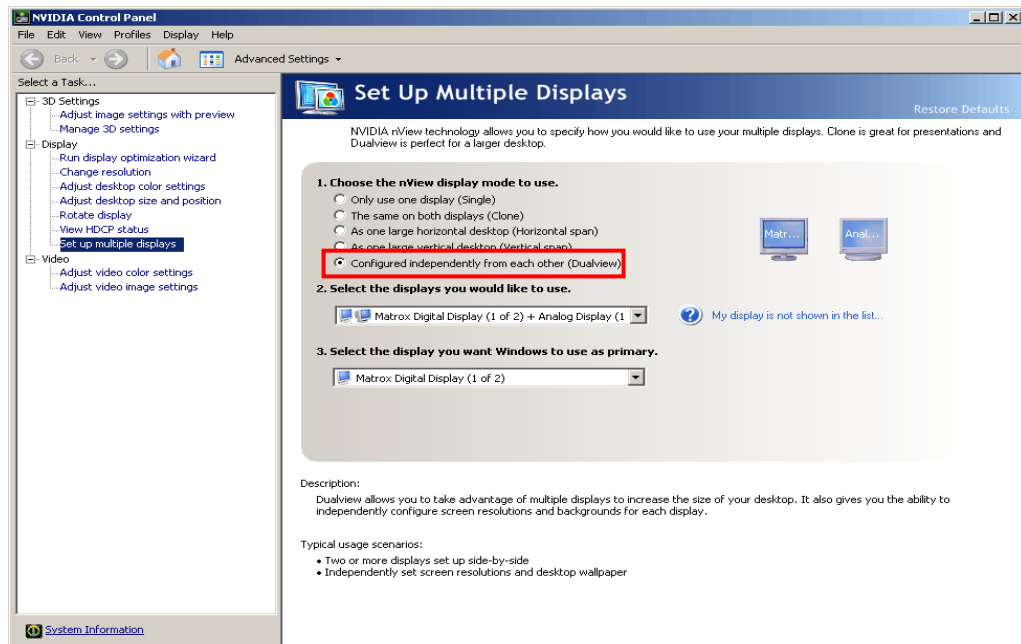
11. Multiple display

11-A. NVIDIA

11-A-1. Launch “NVIDIA Control Panel”.



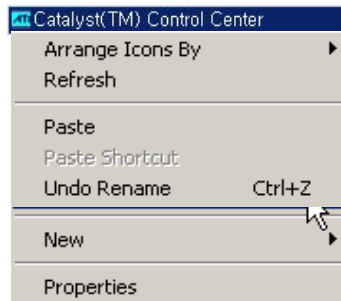
11-A-2. Go to “Set up multiple displays and check “Configured independently from each other (Dualview)”. Then the monitor of *JetPit* will independently display your “Desktop” view.



11-B. ATI

10-B-1. Launch “Catalyst(TM) Control Center”.

The monitor of *JetPit* will automatically display your “Desktop” view.



11-B-2. Go to “Displays Properties” and select monitor 2.



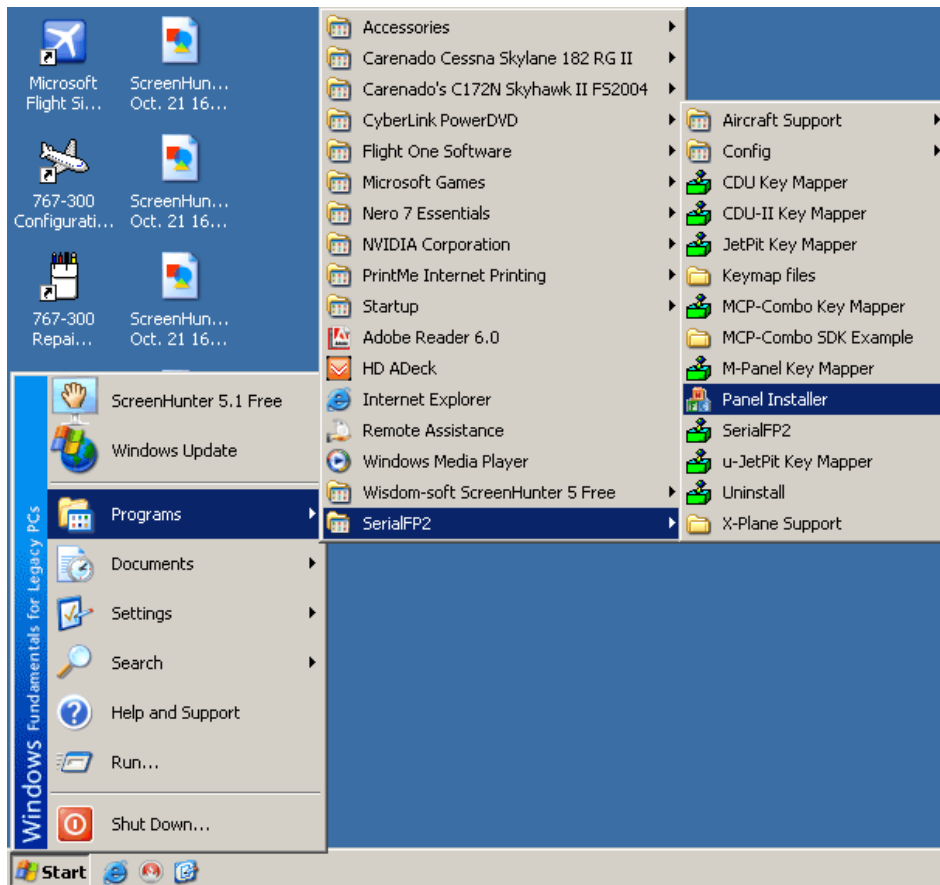
Panel installer launch

Panel installer will copy all necessary panel data to use Jetpit

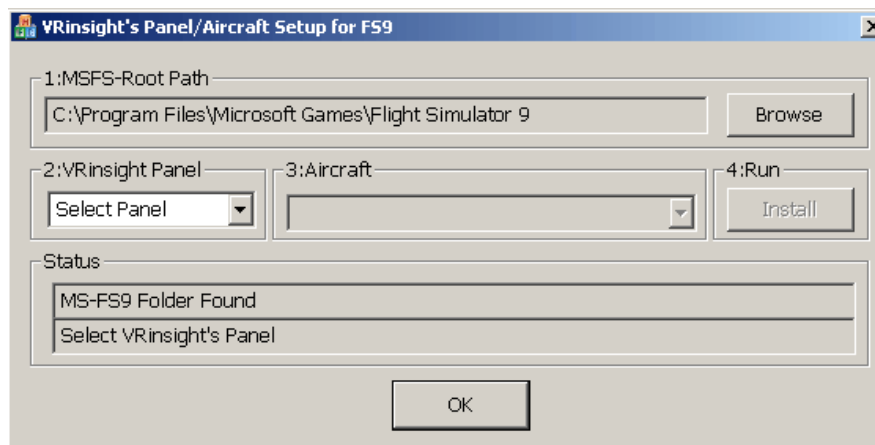
Make sure SerialFP2 is NOT running when running Panel Installer.

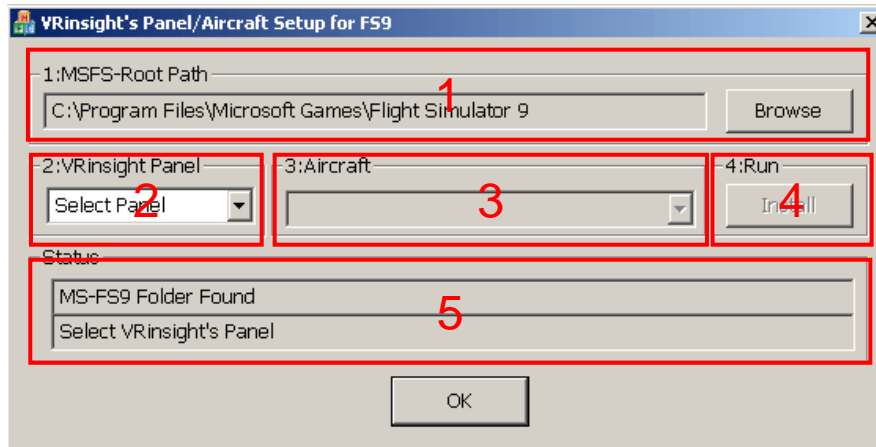
* Once the panel is installed, aircraft configuration is saved.

You can find “Panel Installer” in the Start menu – All programs – Serial FP2



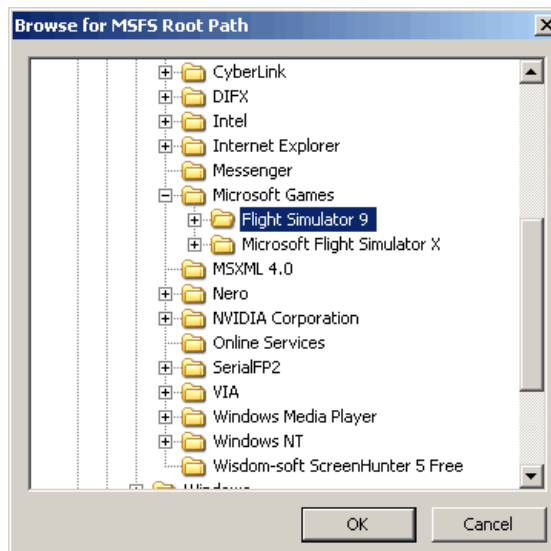
1.Run “Panel Installer” (Do NOT run Serial FP2)



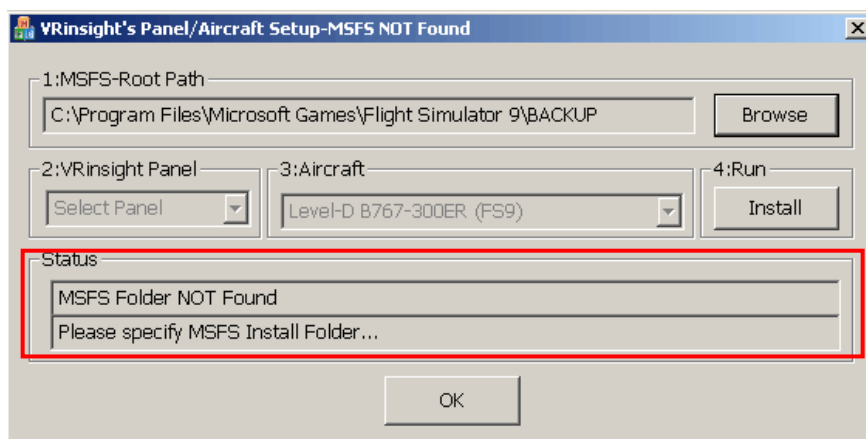


1.MSFS-Root Path : Browse the path where “Flight Simulator 9” or “Microsoft Flight Simulator X” is installed.

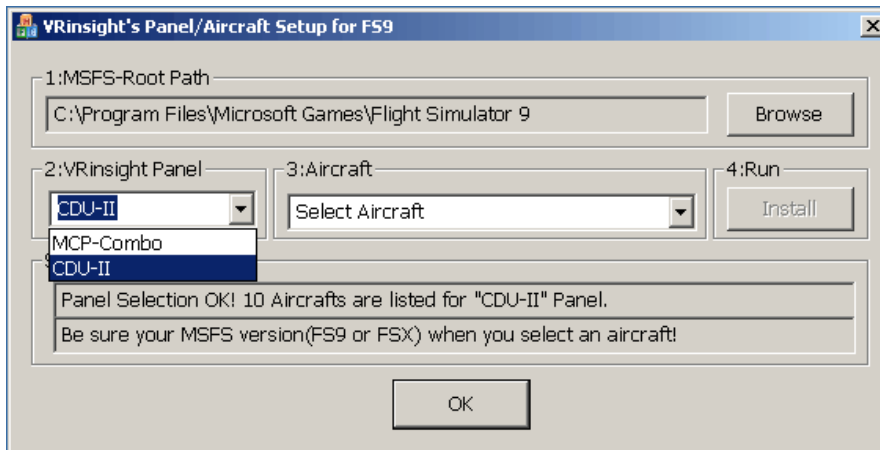
* If “Flight Simulator 9” or “Microsoft Flight Simulator X” is installed other “Drive” or “Directory”, find the path and click “OK”.



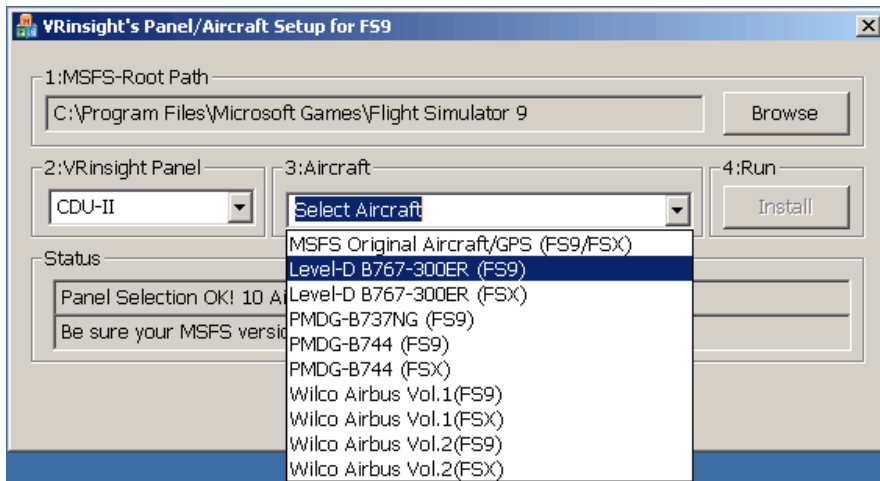
* if you select a wrong path, “Status” window displays error message.



2. **VRinsight panel** : Drop down and select your panel.

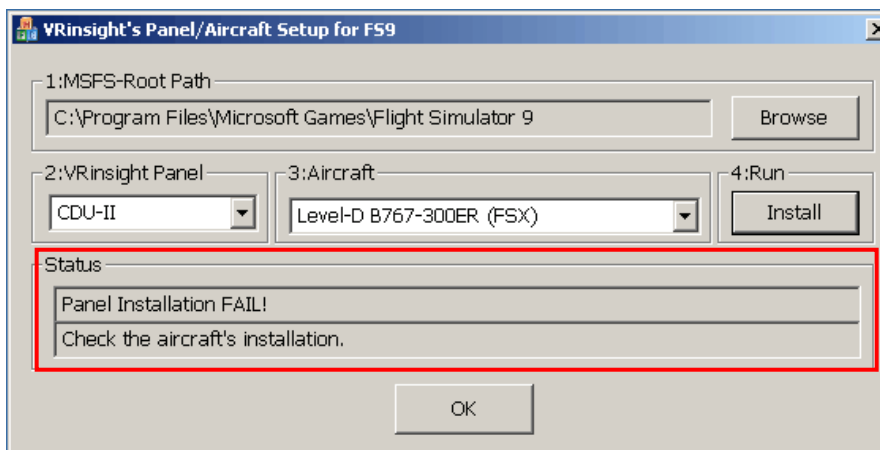


3. **Aircraft** : Drop down and select your aircraft.



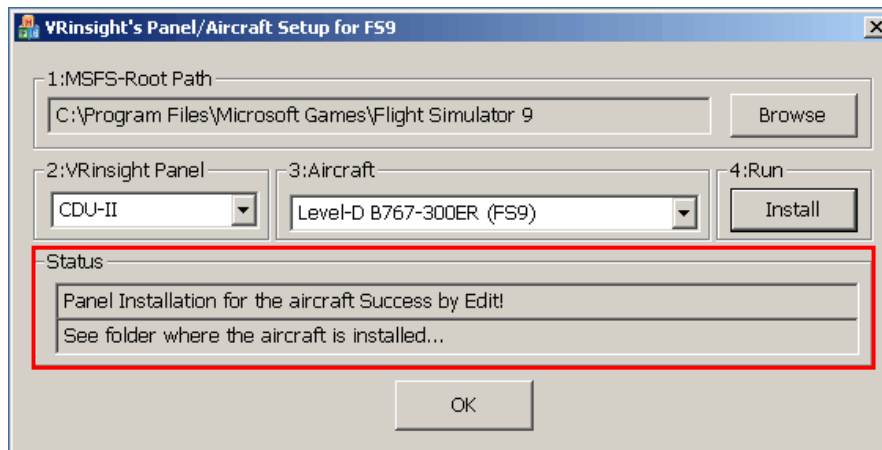
Run :Click "Install" to copy the necessary panel data to use Jetpit.

* If you select an aircraft for FS9 and the "MSFS-Root Path" is for FSX, "Status" window displays error message and all necessary panel data will not be copied. And vice versa.



5. Status : Inform current status.

* If everything is done properly, you will get below message



Preparing *JetPit* before Flight

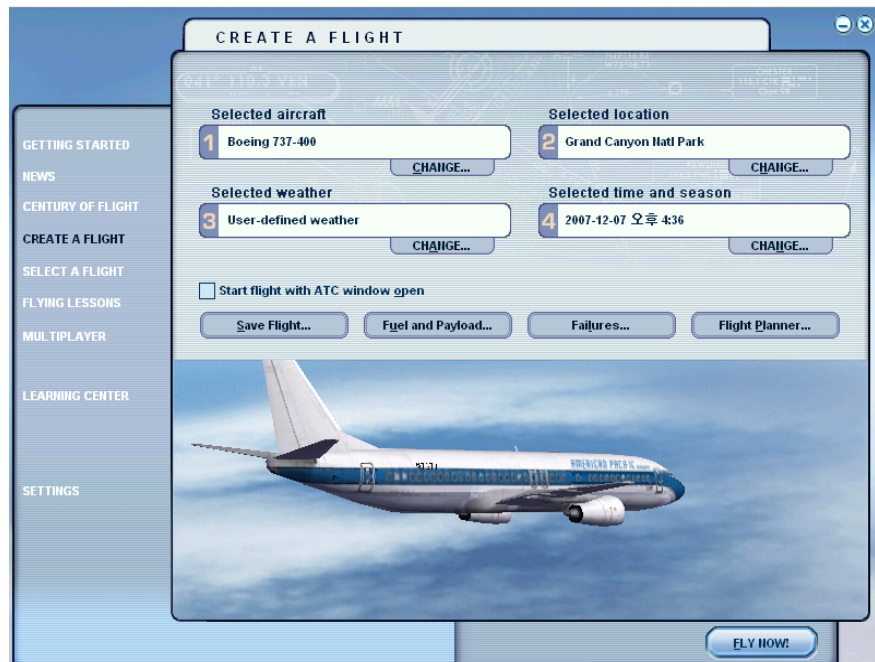
Step 1 : Initial check

Before the first use of your Jetpit panel, please check the following:

- A. Install SerialFP2.
 - * Make sure that “Install USB-Serial Driver” is checked.
- B. Check the USB connection.
 - * If you use a USB hub, it must be USB 2.0 compliant.
- C. Make sure the DC 12V adaptor is plugged in.
- D. Check the DVI or VGA connection.
- E check the monitor setting. (See page no. 7)
- F. Make sure that “Panel Installer” has been properly executed.

Step 2 : Run flight simulator (MSFS9 / MSFSX)

Select your aircraft.



The initial screen of MSFS will be shown like pic 1. Undock it.



Pic 1

Step 3. Go back to the Windows desktop and run SerialFP2 . Select your aircraft and press “Load FS Module” like pic 2



Pic 2

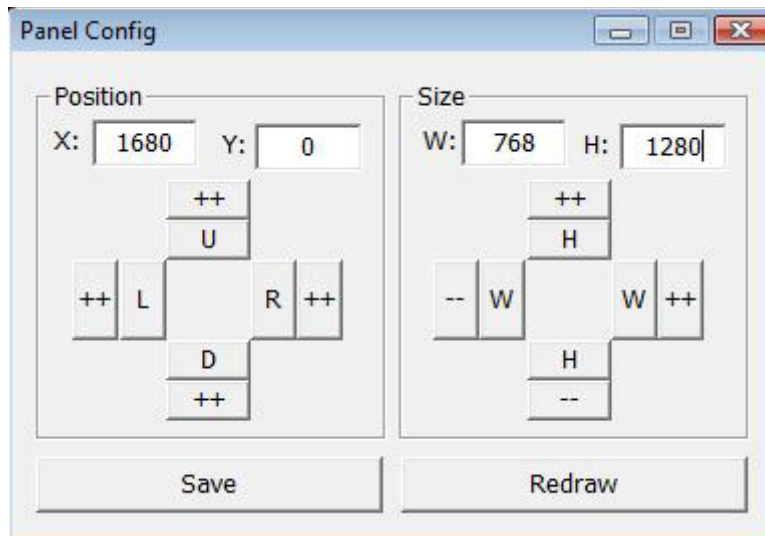
Step 4. All gauges are moved to JetPit like pic 3.



Step 5. If needed, you can re-position the gauges display by “Panel Config” window. Find the minimized “Panel Config” window at the bottom of your monitor like pic 4



Step 6. Put the X & Y position of sub monitor for JetPit and press “Redraw”.



*** For instance,
If X & Y position is same
as page 8,
Put X=1680, Y=0.**

**If X & Y size is same as
page 8, Put W=768,
Y=1280.**

ATTENTION : The values may vary according to your configuration. Experiment until the optimal settings are found.

You can also move and size the CDU Panel using the arrow keys :

X, Y	Current position of gauges display window
++ U	Moves gauges display window to up
++ D	Moves gauges display window to down
++ L	Moves gauges display window to left
++ R	Moves gauges display window to right
W, H	Current size of gauges display window
++ H	Expands in up & lower gauges shape
-- H	Reduces in up & lower gauges shape
++ W	Expands in left & right gauges shape
-- W	Reduces in left & right gauges shape
Redraw	Execute current settings
Save	Save all settings.

Step 7. Press “Save” to save your settings.